

Features

- For telephone line use.
- This protector consists of RSSA (silicon surge absorber) and R·A·V.
- Excellent response time and endurance.
- Available in PCB mounting type and box with modular jack type.

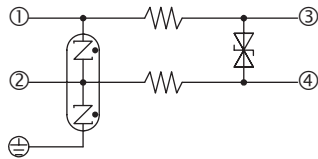


RSP-TEL Series



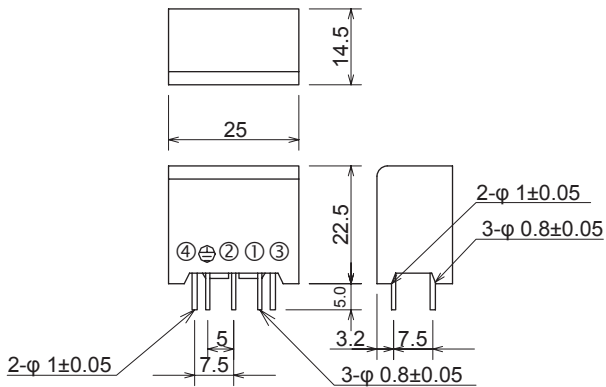
RSP-TEL-B Series

• *Circuit*



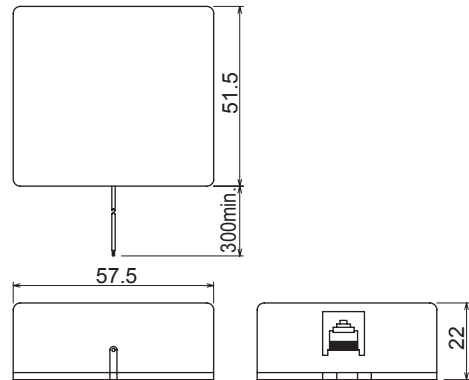
• *Dimensions*

RSP-TEL



Unit: mm
Tolerance: ±0.5

RSP-TEL-B



Unit: mm
Tolerance: ±1.0