



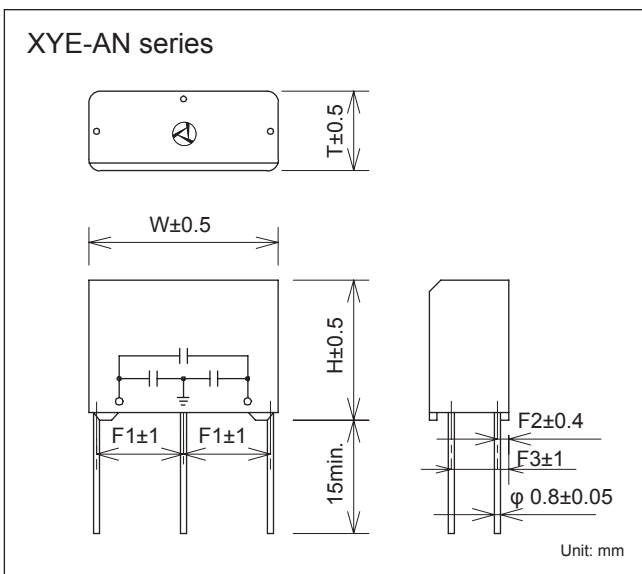
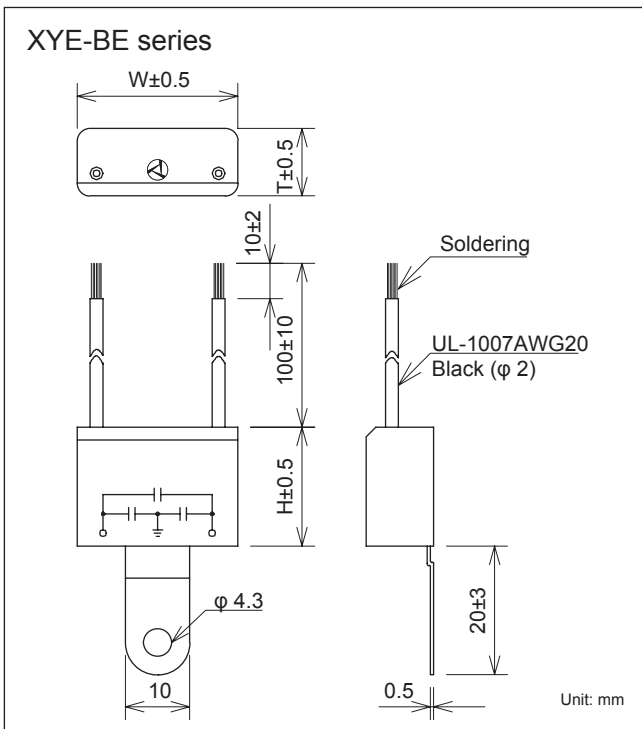
**Features**

- Space saving PWB capacitor network has one X and two Y caps.
- Excellent common and normal mode capability in a wide capacitance selection.
- Flexible wire leads available with optional length.

**Applications**

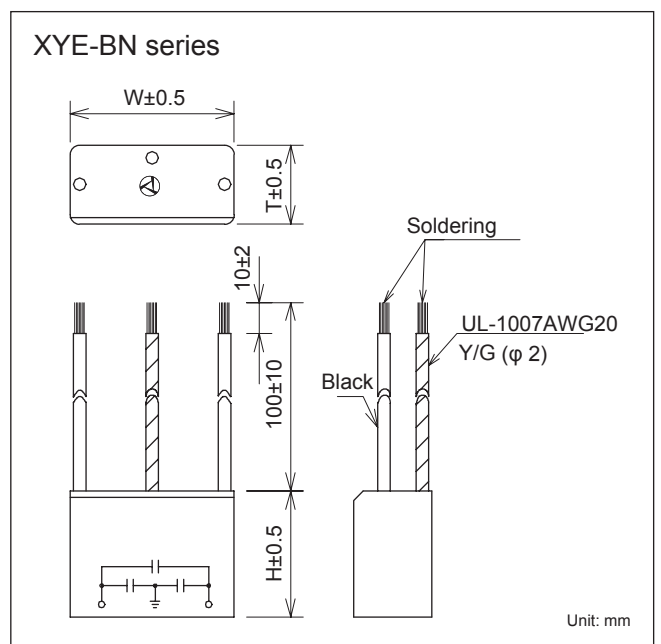
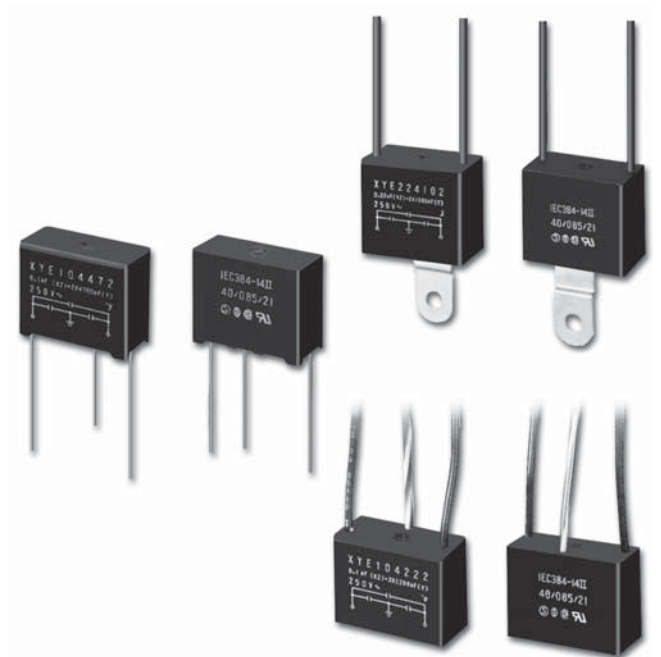
- Designed mainly for suppressing noise occurring in applications.

*Dimensions*



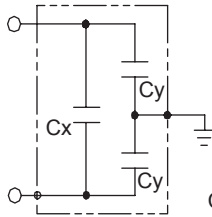
Safety Standard		File No.
UL	:UL1414	E47474
CSA	:C22.2 No.1	LR37404
ENEC-SEMKO	:IEC/EN 60384-14: 2005	SE/0142-15

The "ENEC" mark is a common European product certification mark based on testing to harmonised European safety standard. The mark with #14 stands for SEMKO.



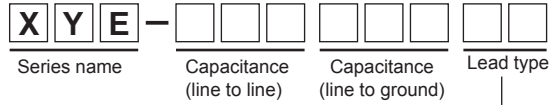


• **Circuit**



Cx: Line to Line (X capacitor)  
Cy: Line to Ground (Y capacitor)

• **Model numbering system**



<b>AN</b>	Bare wire
<b>BN</b>	Flex PVC wire
<b>BE</b>	Flex PVC wire & metal terminal

**Electrical Specifications**

Rated Voltage **250VAC**

Safety Standard	Class	Model Number	Capacitance		Dimensions						Dissipation Factor	Test Voltage	Insulation Resistance
			Cx(μF±20%)	Cy(pF±20%)	W	H	T	F1	F2	F3			
      	X2 · Y2	XYE-473472AN	0.047	4,700	25.0	18.5	10.5	11.5	1.5	6.1	0.01max at 1k ±100Hz	Line to Line 1,250VAC 50/60Hz 60sec	Line to Line Cx ≤0.33μF 15,000MΩmin. Cx =0.47μF 5,000Ω·Fmin.
		XYE-104102AN		1,000		20.0	12.0			7.1			
		XYE-104222AN		2,200									
		XYE-104332AN		3,300									
		XYE-104472AN		4,700									
		XYE-224102AN	0.22	1,000	22.5	14.5	8.6						
		XYE-224222AN		2,200									
		XYE-224332AN		3,300									
		XYE-224472AN		4,700									
		XYE-334222AN	0.33	2,200	30.0	26.0	19.0	13.5	1.8	9.7			
		XYE-334332AN		3,300									
		XYE-334472AN		4,700									
		XYE-474222AN		2,200									
		XYE-474332AN	0.47	3,300	31.0	27.5	18.5	-	-	-			
		XYE-474472AN		4,700									
		XYE-104102BN	0.1	1,000	26.0	20.0	12.5	-	-	-			
		XYE-104222BN		2,200									
		XYE-104332BN		3,300									
		XYE-104472BN		4,700									
		XYE-224102BN	0.22	1,000	23.0	15.0	-	-	-				
		XYE-224222BN		2,200									
		XYE-224332BN		3,300									
		XYE-224472BN		4,700									
		XYE-334222BN	0.33	2,200	31.0	27.5	18.5	-	-	-			
		XYE-334332BN		3,300									
		XYE-334472BN		4,700									
		XYE-474222BN		2,200									
		XYE-474332BN	0.47	3,300	26.0	20.0	12.5	-	-	-			
		XYE-474472BN		4,700									
		XYE-104102BE	0.1	1,000	26.0	20.0	12.5	-	-	-			
XYE-104222BE	2,200												
XYE-104332BE	3,300												
XYE-104472BE	4,700												
XYE-224102BE	0.22	1,000	23.0	15.0	-	-	-						
XYE-224222BE		2,200											
XYE-224332BE		3,300											
XYE-224472BE		4,700											
XYE-334222BE	0.33	2,200	31.0	27.5	18.5	-	-	-					
XYE-334332BE		3,300											
XYE-334472BE		4,700											
XYE-474222BE		2,200											
XYE-474332BE	0.47	3,300	26.0	20.0	12.5	-	-	-					
XYE-474472BE		4,700											

Operating temperature: -40~85°C