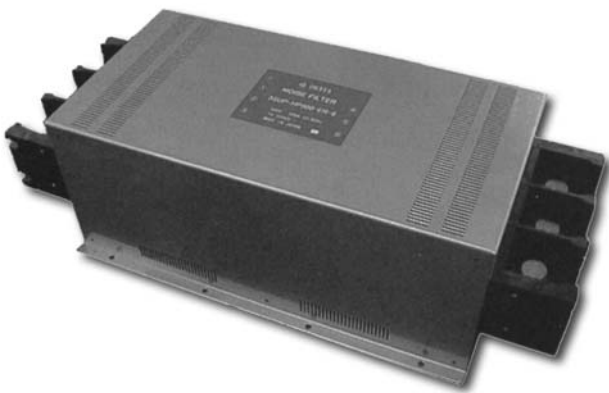


Features

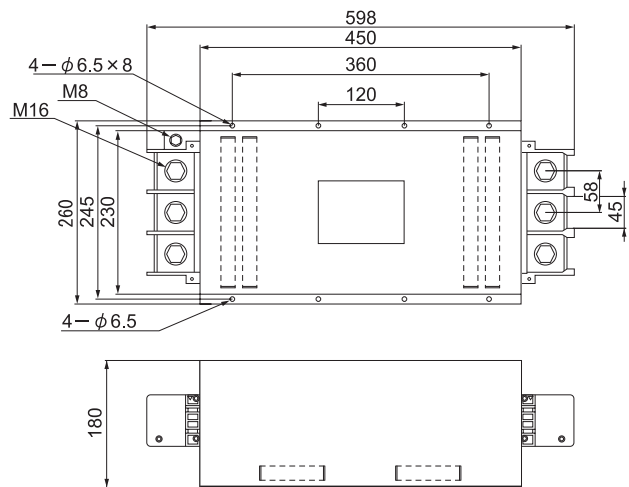
- Three phase filter delta.
- High μ core allows high attenuation.
- EN55011 class A and EN133200.

Applications

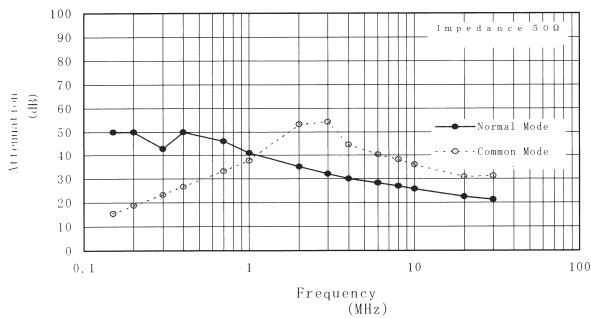
- Inverter power supplies, Servo-operated machinery.



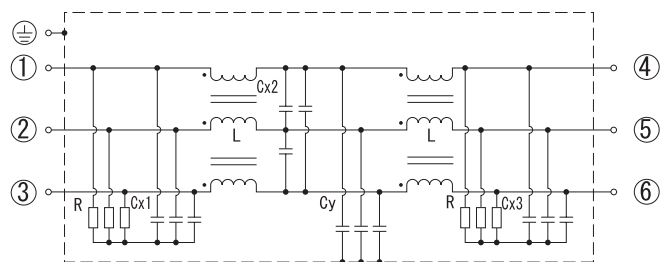
Dimensions



Static characteristics



Circuit



Electrical Specifications

Rated Voltage **500VAC**

Model Number	Rated Current (A)	Test Voltage	Insulation Resistance	Leakage Current (max)	Voltage Drop (max)	Temperature Rise (max)	Operating Temperature (°C)	Insertion losses	
								Normal Mode (MHz)	Common Mode (MHz)
3SUP-HP500-ER-6	500	Line to Ground 2000Vrms 50/60Hz 60sec	Line to Ground 6000MΩmin (at 500VDC)	8mA (at 500Vrms 60Hz)	1.0Vrms	35deg	-25 ~ +50	*1 0.15 ~ 10	*2 0.6 ~ 10
3SUP-HP700-ER-6	700								

Guaranteed attenuation of *1 is more than 15dB and *2 is more than 20dB.