

Features

- Noise filter with built-in surge absorber.
- IEC input connector (EN60320).
- Two terminal styles (Faston®, solder).

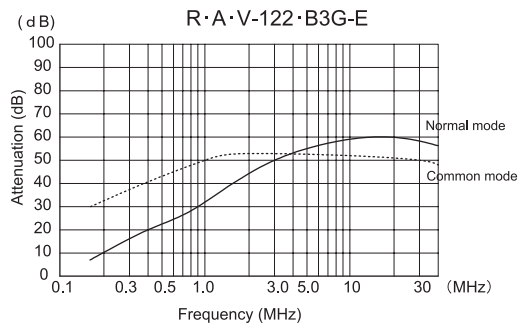
- R · A · V · B □ G · E Series (Faston® terminal)
- R · A · V · B □ G · E · 2 Series (Solder terminal)

Applications

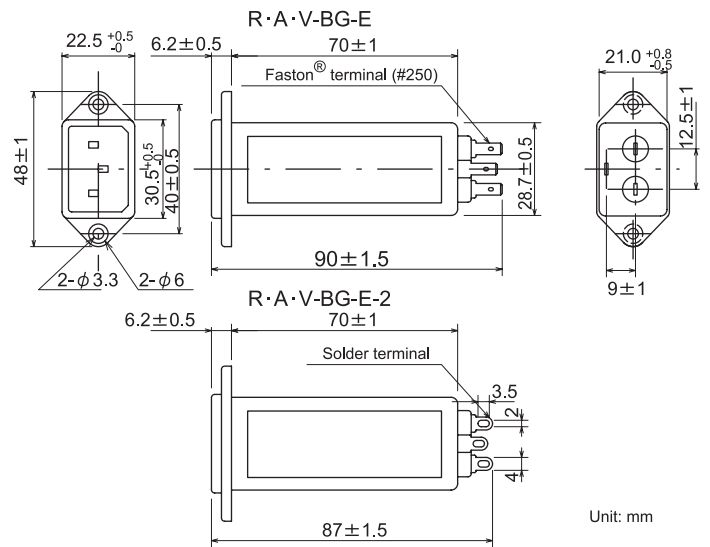
- Information processing systems, Office appliances and Measuring devices.



Static characteristics

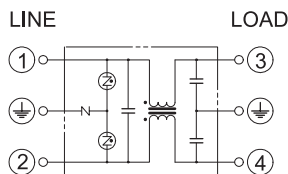


Dimensions



Recommended torque tightness 0.6kg f cm.

Circuit



Electrical Specifications

Rated Voltage **250VAC**

Model Number	Rated Current (A)	Voltage withstand	Impulse voltage withstand	Insulation Resistance	Leakage Current (max)	Voltage Drop (max)	Temperature Rise (max)	Insertion losses	
								Normal Mode (MHz)	Common Mode (MHz)
R·A·V-122·B1G-E-2	1	Line to Line 1000Vrms 50/60Hz 60sec Line to Ground 1250Vrms 50/60Hz 60sec	Line to Ground 1.2/50 μs 12kV	Line to Line 3000MΩmin (at 500VDC) Line to Ground 6000MΩmin (at 500VDC)	0.5 mA (at 250Vrms 60Hz)	1.5Vrms	20deg	1.0 ~ 30	0.2 ~ 30
R·A·V-122·B3G-E-2	3					0.6Vrms		3.0 ~ 30	0.5 ~ 30
R·A·V-122·B6G-E-2	6					0.6Vrms		4.0 ~ 30	2.0 ~ 30

Operating Temperature: -25 ~ +85°C

Guaranteed attenuation is more than 30dB.