



**Features**

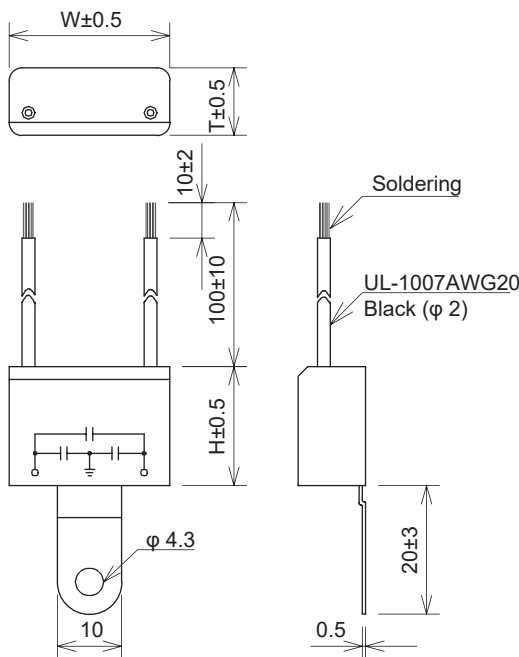
- Space saving PWB capacitor network has one X and two Y caps.
- Excellent common and normal mode capability in a wide capacitance selection
- Flexible wire leads available with optional length

**Applications**

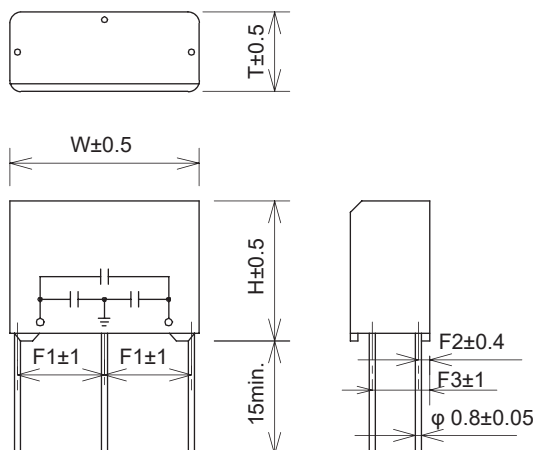
- Designed mainly for suppressing noise occurring in applications

**Dimensions**

**XYE-BE series**



**XYE-AN series**

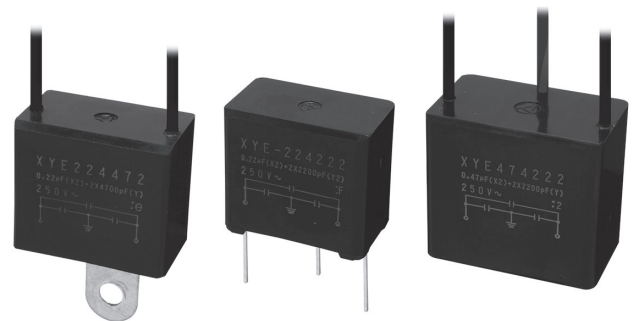


Safety Standard	File No.*
UL :UL60384-14	E47474
cUL :CSA E60384-14	E47474
CSA :CAN/CSA-E60384-14	037404_0_000 104926_0_000
ENEC :IEC/EN60384-14	SE-ENEC-2100972

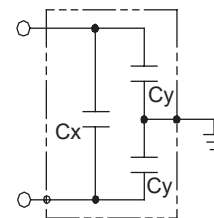
The "ENEC" mark is a common European product certification mark based on testing to harmonised European safety standard. The mark with #14 stands for SEMKO.



\* File No. may be revised without notice. Please contact us at the time of your request for certifications.

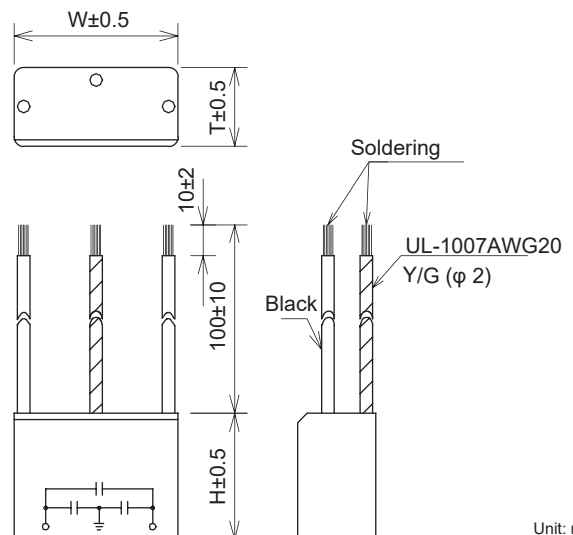


**Circuit**



Cx: Line to Line (X capacitor)  
Cy: Line to Ground (Y capacitor)

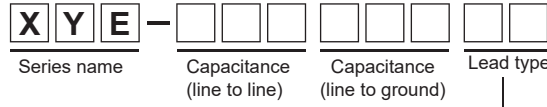
**XYE-BN series**



Unit: mm






• Model numbering system



<b>AN</b>	Bare wire
<b>BN</b>	Flex PVC wire
<b>BE</b>	Flex PVC wire & metal terminal

**Electrical Specifications**

Rated Voltage **250Vac**

Safety Standard	Class	Model Number	Capacitance		Dimensions					Dissipation Factor	Test Voltage	Insulation Resistance	
			Cx(μF±20%)	Cy(pF±20%)	W	H	T	F1	F2				F3
    	X2 · Y2	XYE-473472AN	0.047	4,700	25.0	18.5	10.5	11.5	1.5	0.01max at 1k ±100Hz	Line to Line 1,250Vac 50/60Hz 60sec	Line to Line Cx ≤0.33μF 15,000MΩmin. Cx =0.47μF 5,000Ω•Fmin.	
		XYE-104102AN		1,000		20.0	12.0						7.1
		XYE-104222AN		2,200									
		XYE-104332AN		3,300									
		XYE-104472AN	4,700	0.22	22.5	14.5	8.6						
		XYE-224102AN	1,000										
		XYE-224222AN	2,200										
		XYE-224332AN	3,300										
		XYE-224472AN	4,700	0.33	30.0	26.0	19.0	13.5	1.8	9.7			
		XYE-334222AN	2,200										
		XYE-334332AN	3,300										
		XYE-334472AN	4,700										
		XYE-474222AN	2,200	0.47	31.0	27.5	18.5	-	-	-			
		XYE-474332AN	3,300										
		XYE-474472AN	4,700										
		XYE-104102BN	1,000								26.0	20.0	12.5
		XYE-104222BN	2,200										
		XYE-104332BN	3,300										
		XYE-104472BN	4,700										
		XYE-224102BN	1,000	0.22	23.0	15.0							
		XYE-224222BN	2,200										
		XYE-224332BN	3,300										
		XYE-224472BN	4,700										
		XYE-334222BN	2,200	0.33	31.0	27.5	18.5	-	-	-			
		XYE-334332BN	3,300										
		XYE-334472BN	4,700										
		XYE-474222BN	2,200										
		XYE-474332BN	3,300	0.47	26.0	20.0	12.5	-	-	-			
		XYE-474472BN	4,700										
		XYE-104102BE	1,000										
		XYE-104222BE	2,200										
		XYE-104332BE	3,300	0.22	23.0	15.0							
		XYE-104472BE	4,700										
		XYE-224102BE	1,000										
		XYE-224222BE	2,200										
		XYE-224332BE	3,300	0.33	31.0	27.5	18.5	-	-	-			
XYE-224472BE	4,700												
XYE-334222BE	2,200												
XYE-334332BE	3,300												
XYE-334472BE	4,700	0.47	26.0	20.0	12.5	-	-	-					
XYE-474222BE	2,200												
XYE-474332BE	3,300												
XYE-474472BE	4,700												

Operating temperature: -40~85°C