



AU, TA SERIES

SPARK QUENCHER



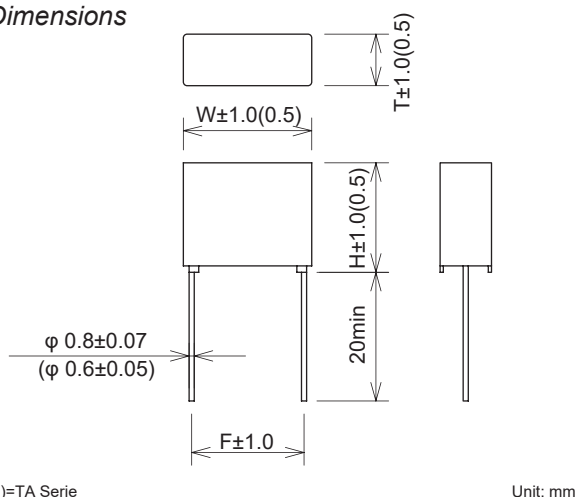
Features

- Compact size
- AC or DC applications

Applications

- Suppressing mechanical switching surge occurring automatic machines and office appliances

• Dimensions



• Model numbering system

Series Name	Resistance	Capacitance
AU	010 10Ω	033 0.033μF
TA	047 47Ω	1 0.1μF
	120 120Ω	

*TA is only available in 120 and 033 combinations.

- AU Series

Safety Standard	File No.*
UL :UL60384-14	E47474
cUL :CSA E60384-14	E47474
CSA :CAN/CSA-E60384-14	037404_0_000 104926_0_000
ENEC/VDE :IEC/EN 60384-14	40007824

The "ENEC" mark is a common European product certification mark based on testing to harmonised European safety standard. The mark with #10 stands for VDE.

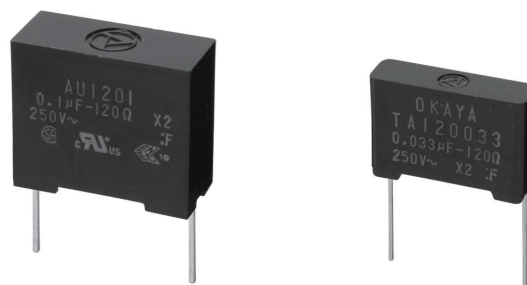


- TA Series

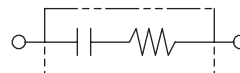
Safety Standard	File No.*
UL :UL60384-14	E47474
cUL :CSA E60384-14	E47474
CSA :CAN/CSA-E60384-14:14	037404_0_000 104926_0_000
VDE :IEC/EN 60384-14	126004

*File No. may be revised without notice. Please contact us at the time of your request for certifications.

- AU Series (lead terminal) • TA Series (lead terminal)



• Circuit



Electrical Specifications

Rated Voltage **250Vac**

Safety Standard	Class	Model Number	Capacitance μF±20%	ResistanceΩ AU:±20% TA:±30%	Dimensions(mm)				Pulse condition				Peak Pulse Voltage	Test Voltage	Insulation Resistance
					W	H	T	F	Peak to peak	Pulse width	Repetitive frequency	Pulse width (sec) x Frequency(Hz)			
	X2	AU120033	0.033	120(1/2W)	20.0	17.0	8.0	17.5	700V max.	20msec max.	120(60)Hz max.	3(0.8) max.	700V	Line to Line 1,250Vac 50/60Hz 2~5sec	Line to Line 15,000Ωmin. Line to Case 100,000Ωmin (at 100Vdc)
		AU1201	0.1							50msec max.		6(1.5) max.			
		AU047033	0.033	47(1/2W)						20msec max.					
		AU0471	0.1							50msec max.		10(2.5) max.			
		AU010033	0.033	10(1/2W)						20msec max.					
		AU0101	0.1							50msec max.					
	X2	TA120033	0.033	120(1/4W)	18.0	12.0	5.0	16.0		20msec max.		3(0.8) max.	800V	Line to Line 2,000Vdc or 1,080Vac Line to Case 2,000Vac	

*1 Regarding superimposed pulse condition, the value of () indicates the condition in case of 250 Vac rating. Please confirm there is no temperature rise when uses for the phase control circuit by 250Vac for example thyristor etc.

*2 Peak to peak value of pulse condition (max.) is the maximum pulse voltage that is overlapped to line voltage and can apply between terminals of spark quencher.

Operating Temperature: -40~+100°C
(TA Series= -40~+85°C)