



# S1-B-O, S2-A-O SERIES

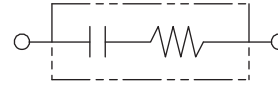
SPARK QUENCHER



## Features

- Rated voltage is 250Vac, general purpose type
- This series have special shape screw fixing terminal

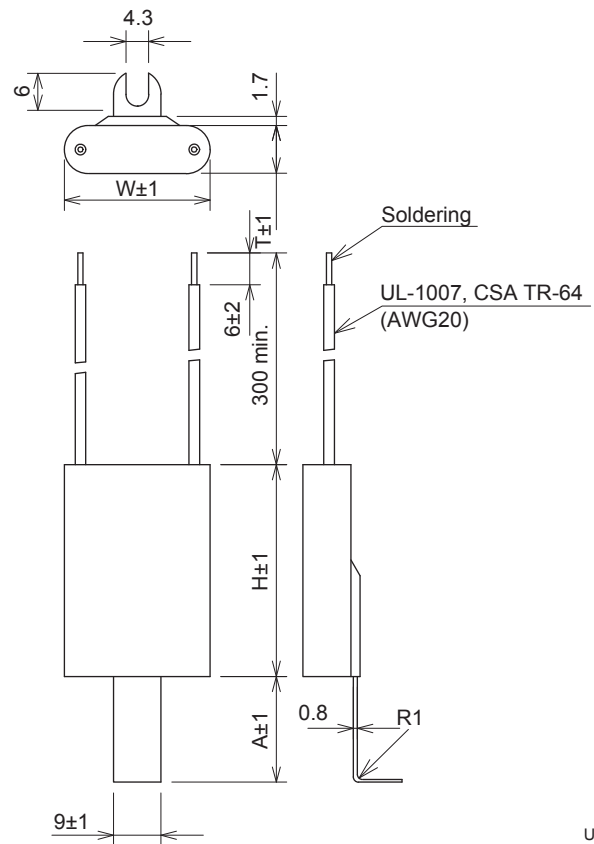
## • Circuit



## Applications

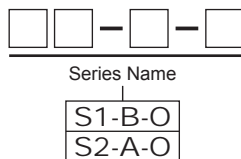
- For contact protection (quenching the contact spark) / absorption of back electromotive surge voltage of automation machine or machine tools etc.

## • Dimensions



Unit: mm

## • Model numbering system



## Electrical Specifications

Rated Voltage **250Vac**

Model Number	Capacitance $\mu\text{F} \pm 20\%$	Resistance $\Omega \pm 30\%$	Dimensions (mm)				Pulse condition (max.)				Peak Pulse Voltage	Test Voltage	Insulation Resistance
			W	H	T	A	Peak to peak	Pulse width	Repetitive frequency	Pulse width (sec) x Frequency (Hz)			
S1-B-O	0.1	200(1/2W)	17.5	40	7.1	20.0	700V max.	50msec max.	360Hz max.	0.45 max.	800V	Line to Line 625Vac 50/60Hz 60sec Line to Case 2,000Vac 50/60Hz 60sec	Line to Line 10,000M $\Omega$ min Line to Case 100,000M $\Omega$ min (at 500Vdc)
S2-A-O	0.2	500(1/2W)	27.5		10.4	30.0				0.15 max.			

\*Peak to peak value of pulse condition(Max) is the maximum pulse voltage that is overlapped to line voltage and can apply between terminals of spark quencher.

Operating Temperature: -40~+85°C