



# RMTE-FA, MA SERIES

SPARK QUENCHER



## Features

- Spark quencher for magnet switch

- Model numbering system



<b>FA</b>	Metalic terminal
<b>MA</b>	PVC+Metalic termina

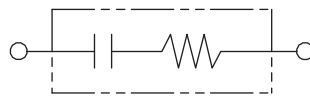
## Applications

- Preventing from generating surge voltage
- Applicable voltage range of coil : AC/DC 24~250V

RMTE-FA



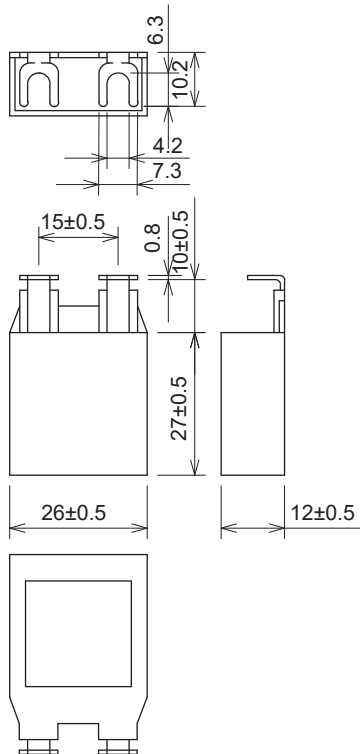
- Circuit



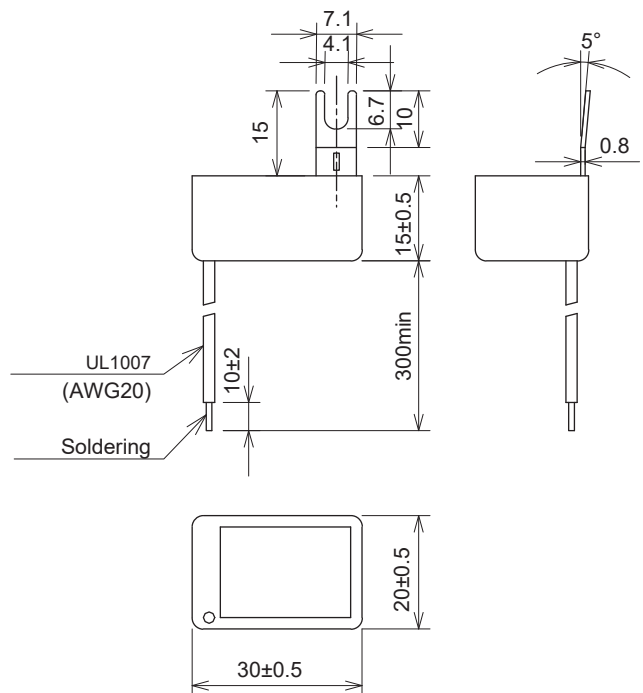
RMTE-MA

- Dimensions

RMTE-FA



RMTE-MA



Unit: mm

## Electrical Specifications

Rated Voltage **250Vac**

Model Number	Capacitance μF±20%	Resistance Ω±30%	Pulse condition				Peak Pulse Voltage	Test Voltage	Insulation Resistance
			Peak to peak	Pulse condition	Repetitive frequency	Pulse width (sec) x Frequency(Hz)			
RMTE-121224-FA	0.22	120 (1/2W)	700V max.	50msec max.	360Hz max.	0.15 max.	800V	Line to Line 625Vac 50/60Hz 60sec Line to Case 2,000Vac 50/60Hz 60sec	Line to Line 10,000MΩmin. Line to Case 100,000MΩmin. (-FA at 100Vdc -MA at 500Vdc)
RMTE-121224-MA									

\*Peak to peak value of pulse condition (max.) is the maximum pulse voltage that is overlapped to line voltage and can apply between terminals of spark quencher.

Operating Temperature: -40~+85°C