



3RDES, 3RDEB SERIES

SPARK QUENCHER



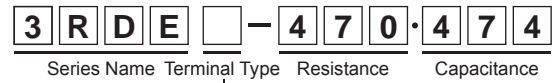
Features

- Three phase delta, detachable to DIN standard rail (35 mm).

Applications

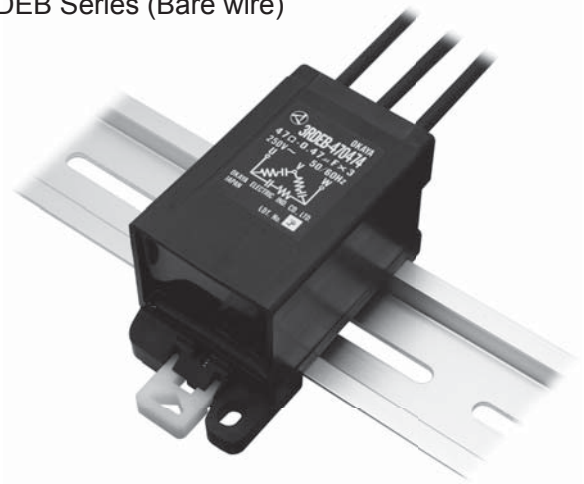
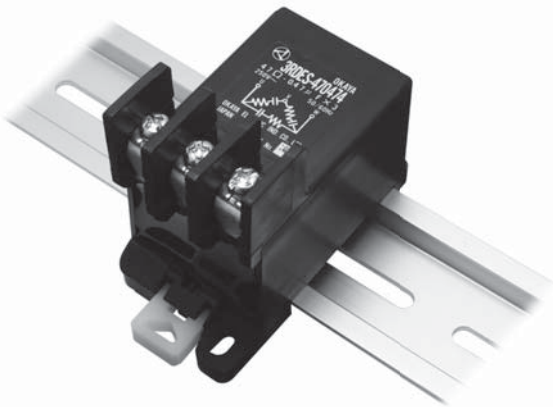
- Absorption of back electromotive surge voltage that generated by three phase motor
- 3RDES Series (Screw terminal)

Model numbering system

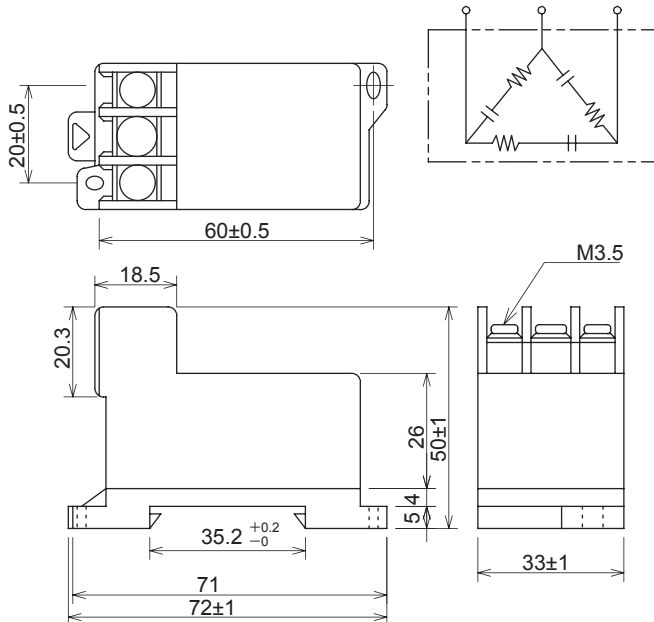


S	Screw terminal
B	Bare wire

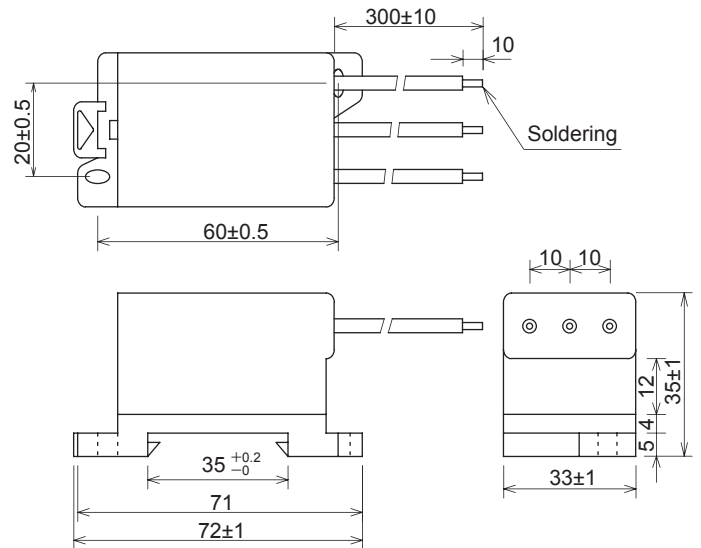
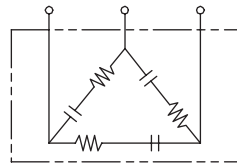
•3RDEB Series (Bare wire)



• Dimensions



• Circuit



Unit: mm

Electrical Specifications

Rated Voltage **250Vac**

Model Number	Capacitance μF±20%	Resistance Ω±30%	Pulse condition (max.)				Peak Pulse Voltage	Test Voltage	Insulation Resistance
			Peak to peak	Pulse width	Repetitive frequency	Pulse width (sec) x Frequency(Hz)			
3RDES-470·474	0.47	47 (1/2W)	700V max.	70msec max.	360Hz max.	0.07 max.	800V	Line to Line 884Vdc or 625Vac 50/60Hz 60sec Line to Case 2,000Vac 50/60Hz 60sec	Line to Line 10,000MΩmin. Line to Case 100,000MΩmin.
3RDEB-470·474									

*Peak to peak value of pulse condition(Max) is the maximum pulse voltage that is overlapped to line voltage and can apply between terminals of spark quencher.

Operating Temperature: -40~+65°C