

## SUP-BR-E SERIES



## SUP-CG-E SERIES

## NOISE FILTERS



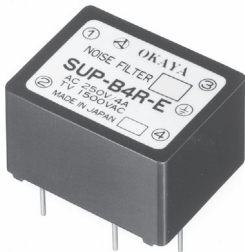
### Features

- High attenuation in MF and HF bands.
- PCB mounting with wire leads.
- Compact size.
- Case material rated UL94-VO.

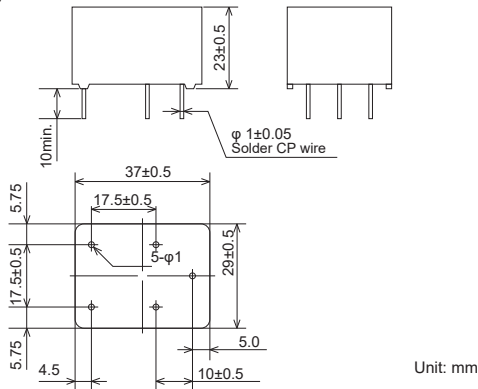
### Applications

- Game machines and Control systems.

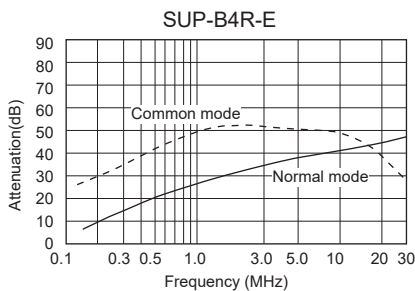
### • SUP-B□R-E Series



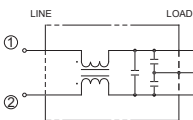
### • Dimensions



### • Static characteristics (Representative example)



### • Circuit



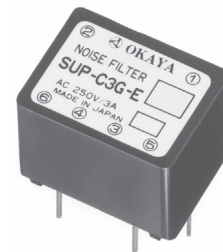
### Features

- High attenuation in MF and HF bands.
- PCB mounting with wire leads.
- Compact size.
- Case material rated UL94-VO.

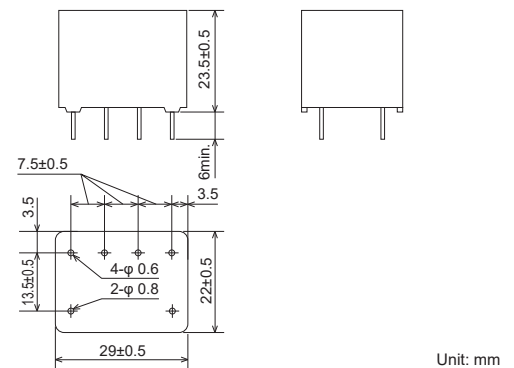
### Applications

- Game machines and Control systems.

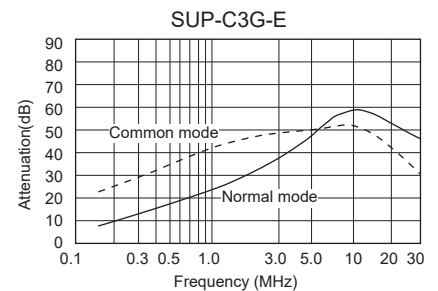
### • SUP-C□G-E Series



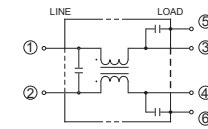
### • Dimensions



### • Static characteristics (Representative example)



### • Circuit



## Electrical Specifications

Rated Voltage **250Vac**

Model Number	Rated Current (A)	Test Voltage	Insulation Resistance	Leakage Current max.	Voltage Drop max.	Temperature Rise max.	Operating Temperature (°C)	Insertion losses		Weight typ.(g)
								Normal Mode (MHz)	Common Mode (MHz)	
SUP-B2R-E	2	Line to Line 1,000Vac 50/60Hz 60sec Line to Ground 1,500Vac 50/60Hz 60sec	Line to Line 1,000MΩmin Line to Ground 1,000MΩmin (at 500Vdc)	1.0mA (at 250Vac 60Hz)	1.0Vac	20K	-20 ~ +65 (85°C with Temp. rise)	0.9 ~ 10	0.4 ~ 10	41
SUP-B4R-E	4							1.5 ~ 10	0.7 ~ 10	
SUP-B6R-E	6							2.0 ~ 10	2.0 ~ 10	
SUP-C3G-E	3	Line to Line 1,500Vac 50/60Hz 60sec	Line to Line 1,000MΩmin Line to Ground 1,000MΩmin (at 500Vdc)	0.6Vac	30K	-20 ~ +55 (85°C with Temp. rise)	2.0 ~ 30	1.0 ~ 10	23	
SUP-C6G-E	6						4.0 ~ 30	*1.5 ~ 20		

Guaranteed attenuation is more than 25dB in normal mode and more than 30dB in common mode. (\*more than 25dB)