

Features

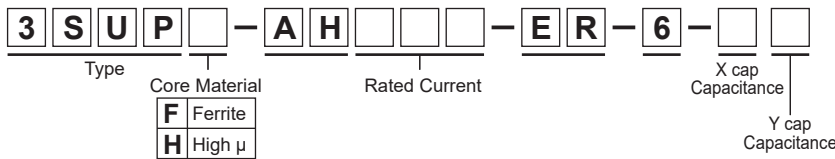
- Three-phase filter delta (500Vac)
- 30% smaller size of former model
- The capacitance of X and Y capacitor is selectable.

Applications

- Inverter power supplies, UPS, NC controlled machineries

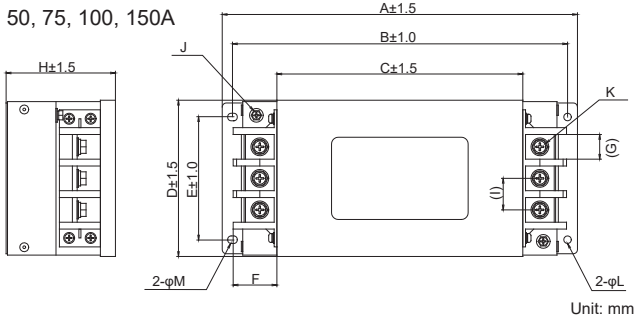


• Model numbering system



• Dimensions

50, 75, 100, 150A



Model Number	Dimensions(mm)												
	A	B	C	D	E	F	G	H	I	J	K	L	M
3SUP□-AH50	185	170	120	110	85	23	13	80	18	M4	M6	5.5	5.5x7
3SUP□-AH75	260	245	182	116	90	33	18	80	23	M4	M6	5.5	5.5x7
3SUP□-AH100	260	245	182	116	90	33	18	80	23	M4	M6	5.5	5.5x7
3SUP□-AH150	310	290	220	163	133	42	25	100	30	M6	M8	6.5	6.5x8

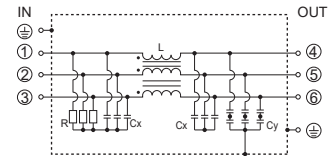


Safety Standard	File No.
UL :UL-1283	E78644
cUL :CSA C22.2 No.8	
SEMKO :EN60939-3	SE-ENEC-2201390

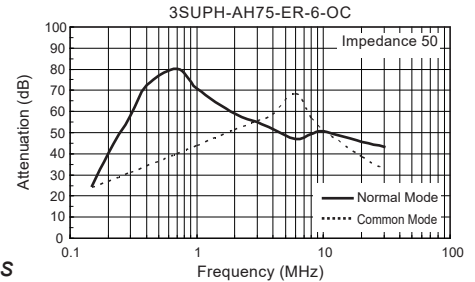
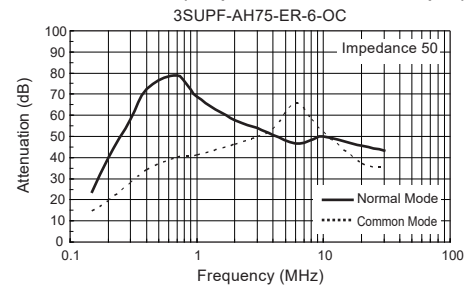
The "ENEC" mark is a common European product certification mark based on testing to harmonised European safety standard.

*File No. may be revised without notice. Please contact us at the time of your request for certifications.

• Circuit

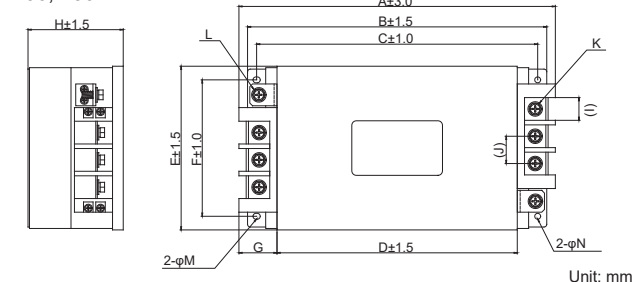


• Static characteristics (Representative example)



• Dimensions

200, 250A



Model Number	Dimensions(mm)													
	A	B	C	D	E	F	G	H	I	J	K	L	M	N
3SUP□-AH200	349	330	310	265	180	150	42	105	25	30	M8	M8	6.5x8	6.5
3SUP□-AH250	364	345	325	280	180	150	42	120	25	30	M8	M8	6.5x8	6.5

Electrical Specifications

Rated Voltage **500Vac**

Safety Standard	Model Number *1	Rated Current (A)	Test Voltage	Insulation Resistance	Leakage Current max. *2	Voltage Drop max.	Temperature Rise max.	Operating Temperature (°C)	Weight typ.(kg)
	3SUP□-AH50-ER-6-OC	50	Line-Case 2,000Vac 50/60Hz 60sec	Line-Case 6,000M Ω min (at 500Vdc)	4.7mA (at 500Vac 60Hz)	1.0Vac	50K	-25 ~ +50 (100°C with Temp. rise)	2.0
	3SUP□-AH75-ER-6-OC	75							3.2
	3SUP□-AH100-ER-6-OC	100							7.0
	3SUP□-AH150-ER-6-OC	150							8.5
	3SUP□-AH200-ER-6-OC	200							10.0

*1 Standard type

*2 Leakage current of Standard type