



Features

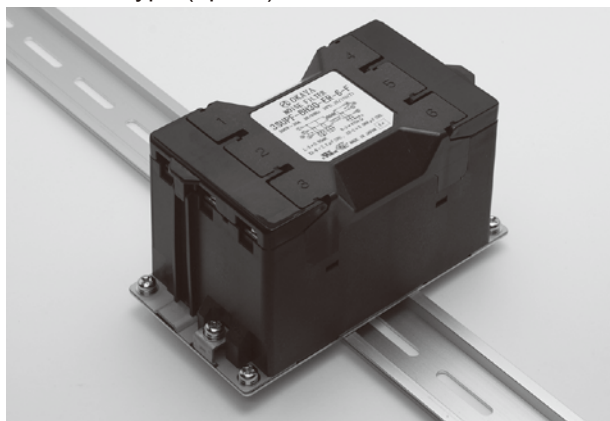
- Terminal preventing loosening screw
- Three-phase, three-wire (500Vac rated)
- Two type of inductance coil is available: F means ferrite, H means high μ
- DIN rail type is option

Applications

- Inverter power supplies, UPS, NC controlled machineries



- DIN rail type (option)



| Safety Standard | File No. |
|-----------------------|-----------------|
| UL :UL-1283 | E78644 |
| cUL :CSA C22.2 No.8 | E78644 |
| ENEC/SEMKO :EN60939-3 | SE-ENEC-2201404 |

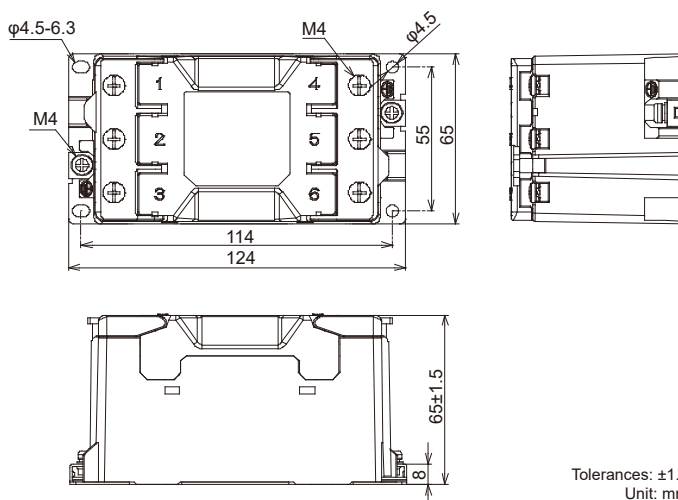
The "ENEC" mark is a common European product certification mark based on testing to harmonised European safety standard.

*File No. may be revised without notice. Please contact us at the time of your request for certifications.

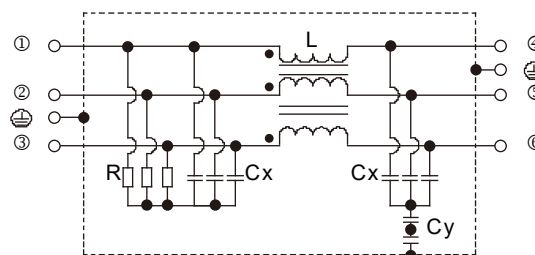
- Model numbering system

| 3 | S | U | P | - | B | H | - | E | R | - | 6 | - | | - | |
|-------------|---------------|------------------------|-------------------------|---|---|---|---|---|---|---|---|---|--|-------------------|--------|
| Three-phase | Core Material | Rated Current | Leakage Current | | | | | | | | | | | | Option |
| Three-wire | F Ferrite | F 5.5mA(Standard Type) | F 5.5mA(Standard Type) | | | | | | | | | | | None Non option | |
| System | H High- μ | | *7 varieties (0.8~37mA) | | | | | | | | | | | DIN DIN rail type | |

- Dimensions



- Circuit



Electrical Specifications

Rated Voltage **500Vac**

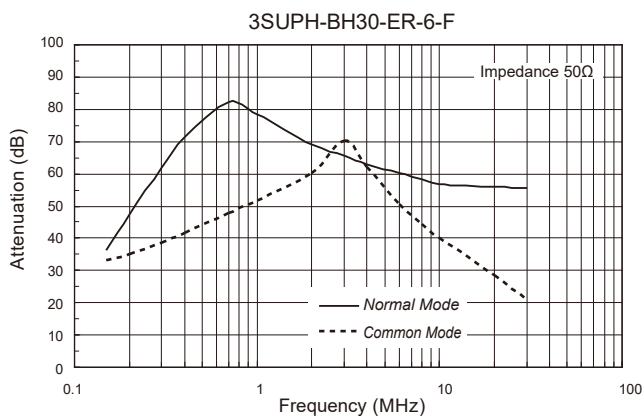
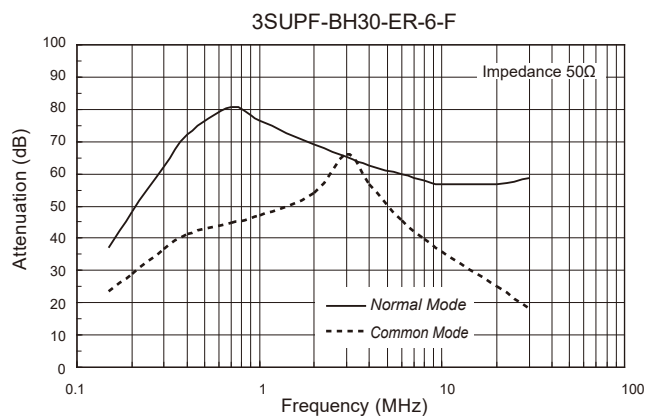
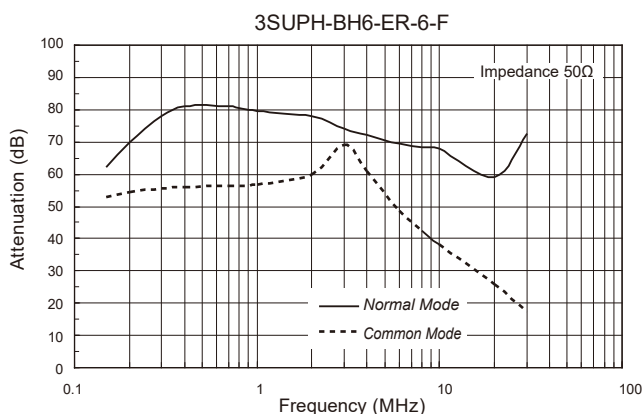
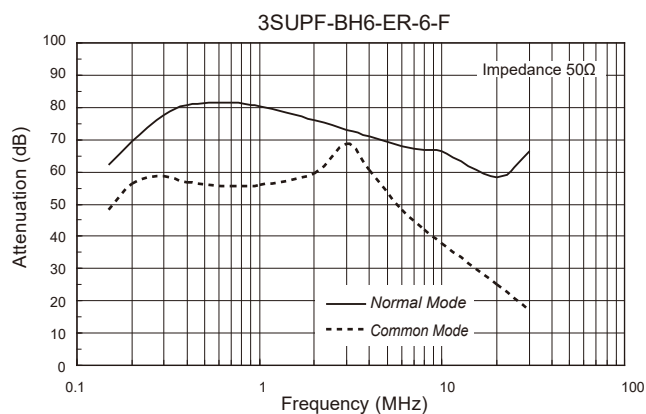
| Safety Standard | Model Number*1 | Rated Current (A) | SCCR *2 (kA) | Test Voltage | Insulation Resistance | Leakage Current max. | Voltage Drop max. | Temperature Rise max. | Weight typ.(g) |
|-----------------|-------------------|-------------------|--------------|---|---|------------------------------|-------------------|-----------------------|----------------|
| | 3SUP□-BH6-ER-6-F | 6 | 10 | Line to case 2,000Vac 50/60Hz 60sec | Line to case 6,000MΩmin (at 500Vdc) | 5.5mA (at 500Vac 60Hz) | 1.0Vac | 60K | 490 |
| | 3SUP□-BH10-ER-6-F | 10 | | | | | | | 510 |
| | 3SUP□-BH20-ER-6-F | 20 | | | | | | | 530 |
| | 3SUP□-BH30-ER-6-F | 30 | | | | | | | 540 |

*1 Standard type *2 Leakage current of Standard type

Operating Temperature: -25~+50°C(Derating of current from 50 to 85°C)

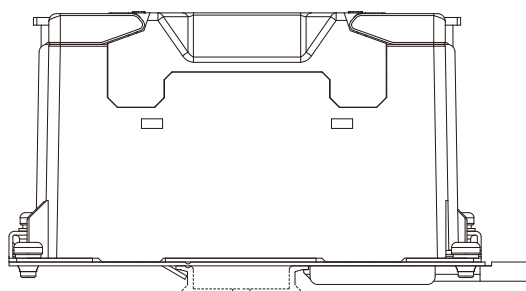
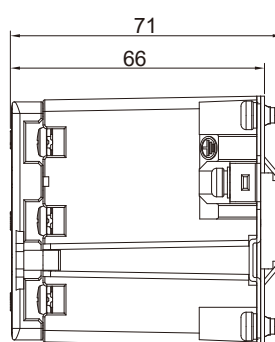
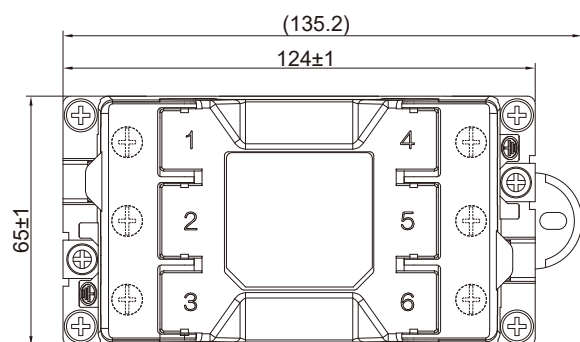


● Static characteristics (Representative example)



● Dimensions

DIN rail type (option)



Tolerances: ±1.5
Unit: mm

- Note when installing EMI filter on DIN rail
Even though the ground connects correctly through the DIN rail, may not get noise attenuation. Be sure to connect the FG ground of EMI filter to the ground directory.