

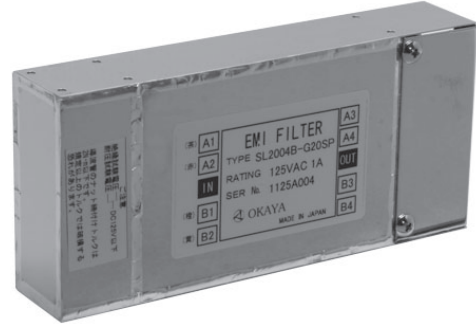


Features

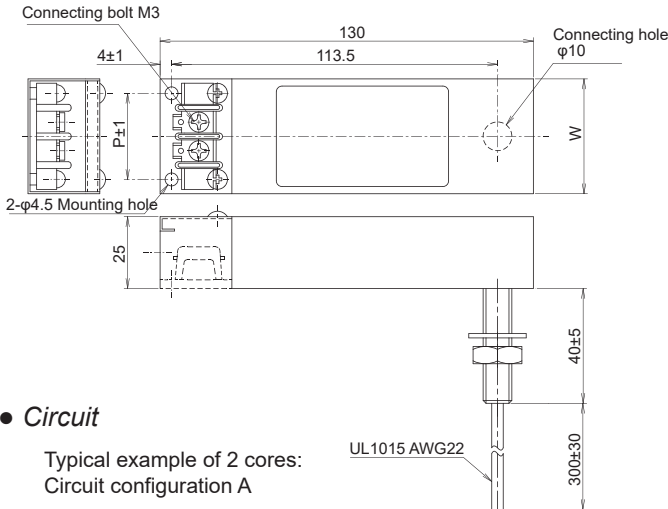
- Non-magnetic case, compact size
- Low Leakage Current
- Can be used for LED lighting

Applications

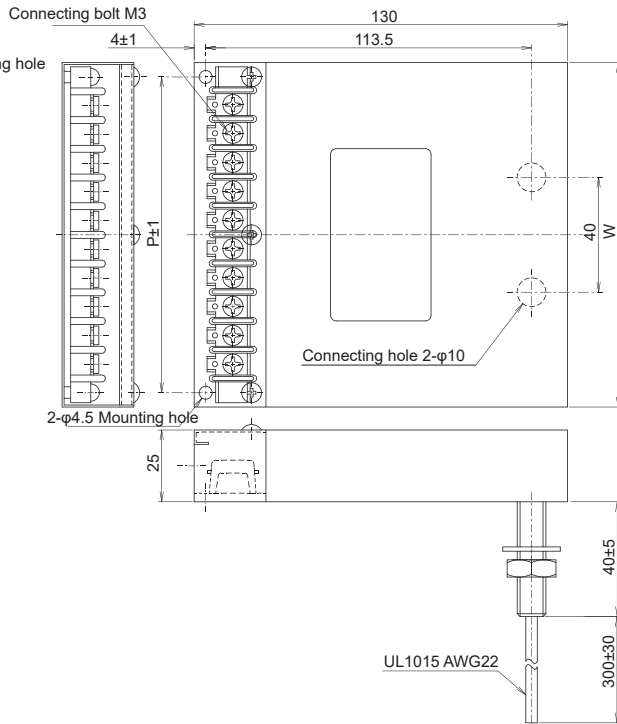
- Noise shielding rooms (MRI, EEG and EMG laboratories, operating rooms, etc.)
- Fire alarm (detector), speaker (including emergency broadcast speaker), oxygen monitor, intercom, LED lighting, etc.



- **Dimensions**
SL2002B-B20SP
SL2004B-B20SP

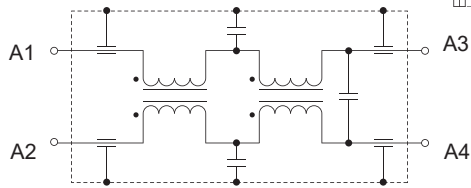


- SL2006B-B20SP
SL2008B-B20SP
SL2010B-B20SP



Circuit

Typical example of 2 cores:
Circuit configuration A



Unit: mm

Model Number	number of cores	Dimensions (mm)		Number of circuits, circuit configuration, terminal, wire color						Output tube
		W	P	Number of circuits	Circuit configuration	Terminal	Wire color	Terminal	Wire color	
SL2002B-B20SP	2	40	30	1	A	A1-A3	Brown	A2-A4	Red	1-φ10
SL2004B-B20SP	4	60	50	2	A, B	B1-B3	Orange	B2-B4	Yellow	1-φ10
SL2006B-B20SP	6	80	70	3	A, B, C	White Identification by markers			2-φ10	
SL2008B-B20SP	8	100	90	4	A, B, C, D				2-φ10	
SL2010B-B20SP	10	120	110	5	A, B, C, D, E				2-φ10	

Rated Voltage **125Vac/Vdc**

Model Number	Rated Current (A)	Test Voltage	Insulation Resistance	Leakage Current max. at 125Vac 60Hz DC connection: 0mA	Operating Temperature (°C)	Attenuation Characteristics
SL2002B-B20SP	1	Line to ground 250Vdc 60sec	Line to ground 125Vdc 20MΩ min. 60sec	10mA	-20~ +50	500kHz~1GHz 100dB min.
SL2004B-B20SP	1			20mA		
SL2006B-B20SP	1			30mA		
SL2008B-B20SP	1			40mA		
SL2010B-B20SP	1			50mA		

Please inquire about odd-numbered (3-core) filters.