



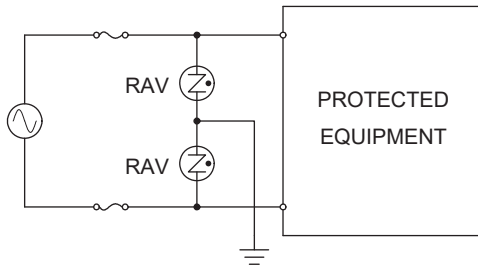
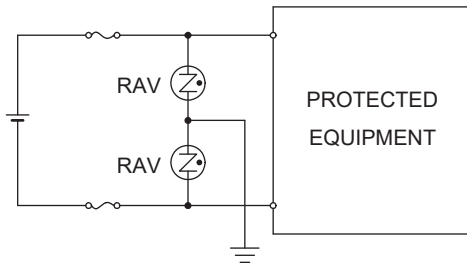
# Basic circuits and applications for SPD

SPD (Surge Protective Device)



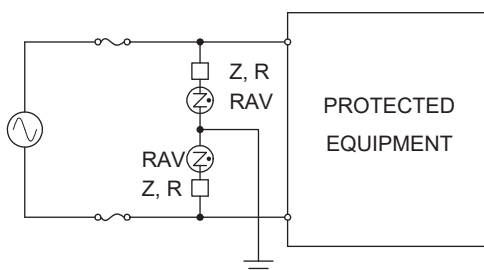
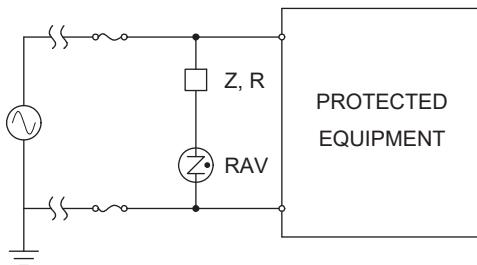
## BASIC CIRCUIT TO PROTECT EQUIPMENT

- Input impedance is high



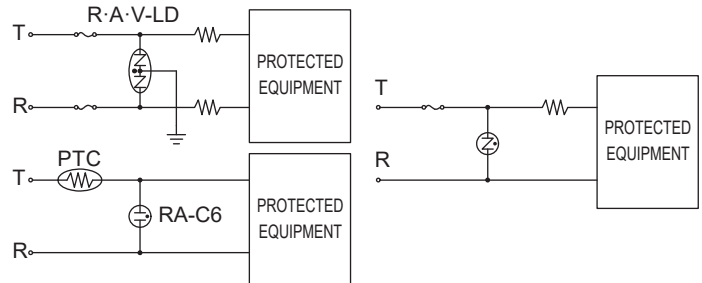
- Input impedance is low

The resistors (R) or MOV (Z) control continuous flow discharge and low value ones should be selected so as not to reduce the capacity of the surge protection device.

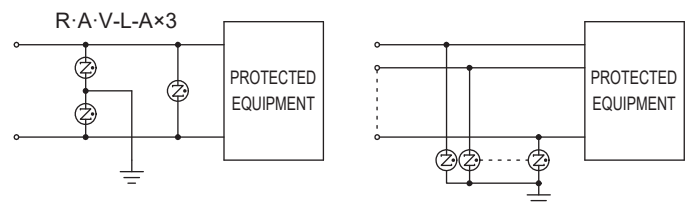


## APPLICATION

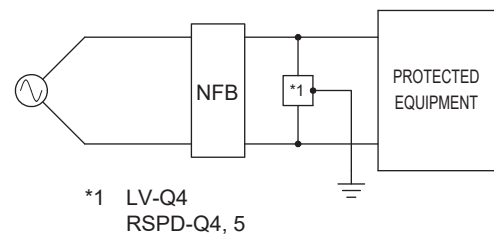
- Protecting telephone lines



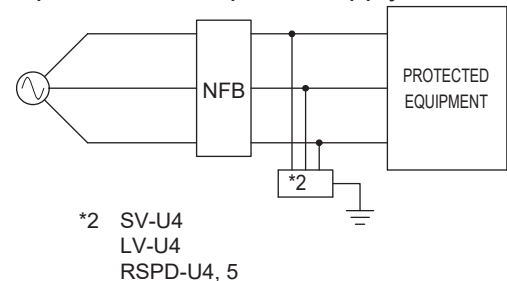
- Protecting telecommunications and signal lines



- Single phase power supply



- Three-phase inverter power supply



- Protecting power supply for vending machine

