

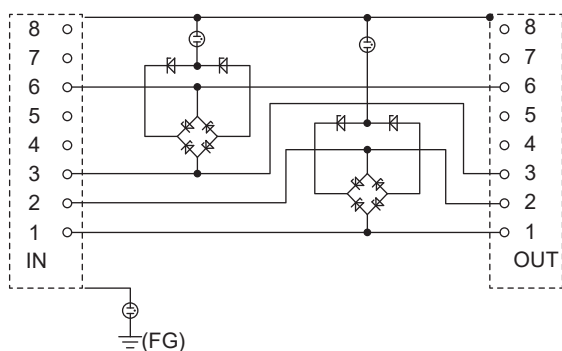
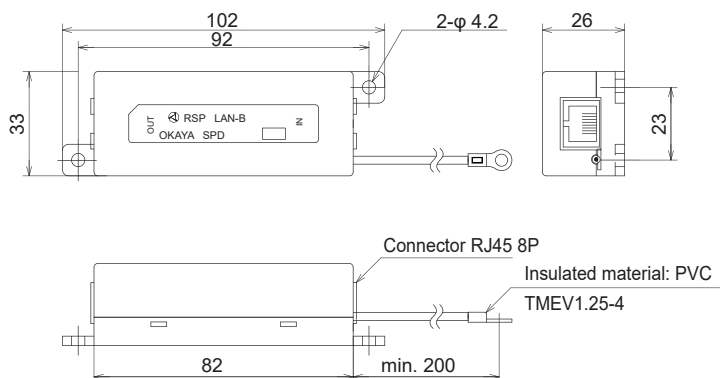
**Features**

- RSP-LAN-B is a surge protector for Ethernet LAN10/100BASE-T that prevails in LAN network and it protects a network system from lightning surge by attaching this between the application and cables.

Electrical Specifications

Max. Line Voltage	13.26V (L-L)
Impulse Withstand Voltage Capacity	4,000V (L-G)
Nominal Breakdown Voltage	16.4V±10% (L-L)
Capacitance	20pF max. (L-L) 1pF max. (L-G)

Operating Temperature: -20~+60°C

**• Circuit****• Dimensions**Unit: mm
Tolerance: ±1.0

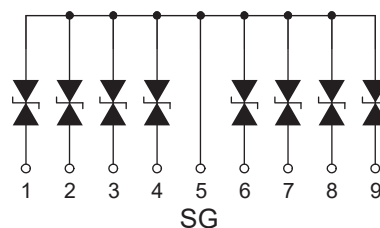
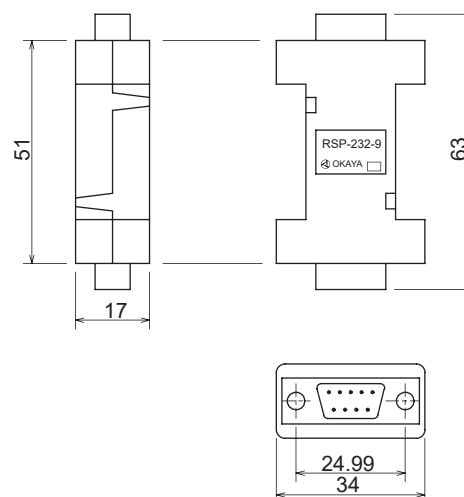
RSP-232-9 series is designed for RS(EIA)-232 which is widely used as standard specifications for data input-output in serial data terminals. These protectors will be installed between equipment and cable to protect equipment from surge caused by electrostatic discharge and switching surge.

This will be installed in both end of the cable.

Also 9 pin type is available for the use in IBM PC.

Electrical Specifications

- Breakdown voltage: 22V @1mA (L-SG)

**• Circuit****• Dimensions**

Unit: mm