

RSP-485 Series

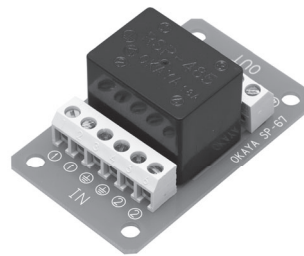
These are surge protection devices designed for RS(EIA)-485/422, protecting driver/ receiver ICs in input-output terminals, from surge such as lightning.

Features

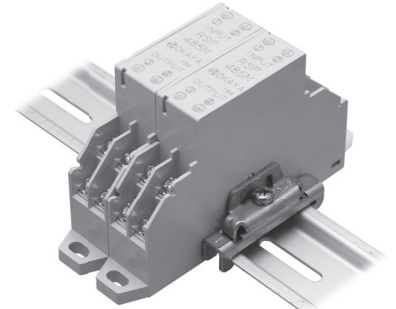
- This protector consists of RSSA (silicon surge absorber) and R·A·V.
- Excellent response time and endurance.
- Small gain loss in long distance communication by the use of common mode choke coils in impedance blocks.
- PCB mounting type, terminal block type and DIN rail box type available.



PCB mounting type

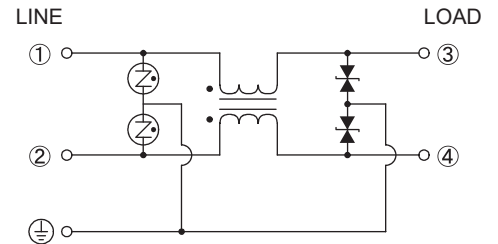


Terminal block type

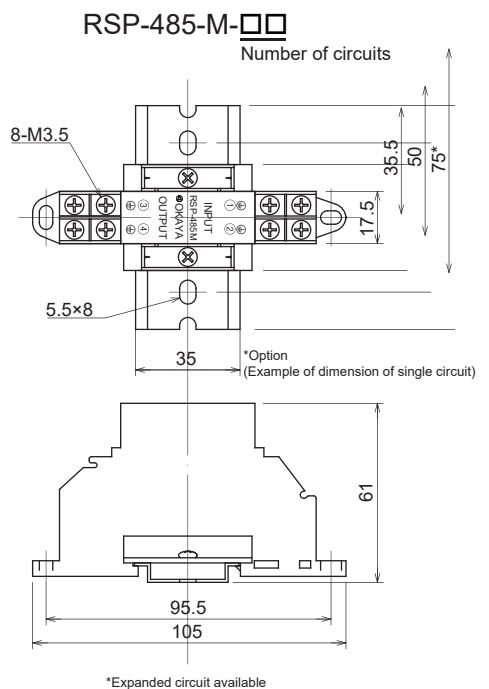
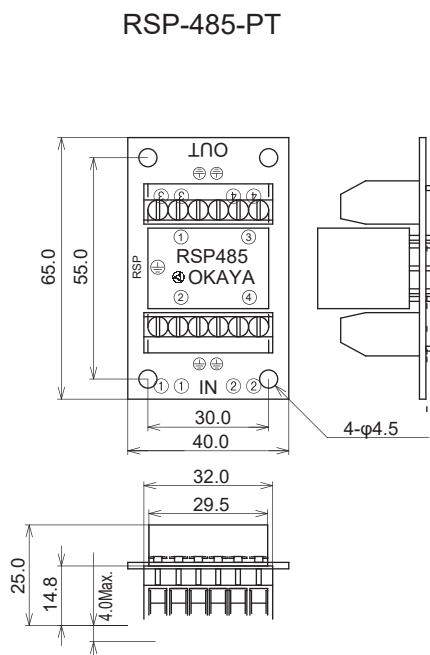
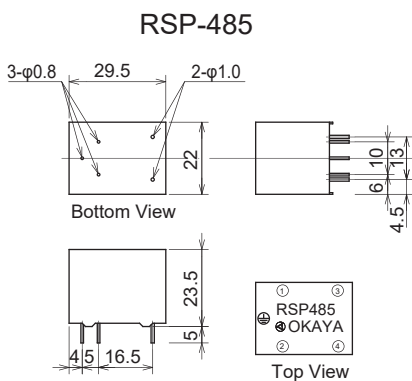


DIN rail box type
*Dinrail is optional

• *Circuit*



• *Dimensions*



Unit: mm
Tolerance: ±1.0