

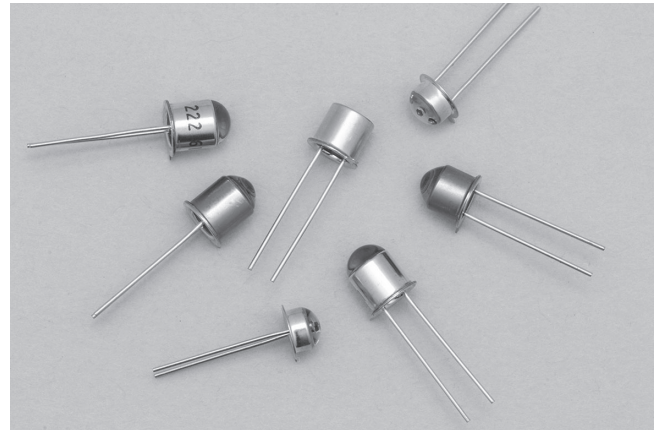
- **Infrared LED emitting collimated light**
High precision, high definition, and high reliability infrared LED series for encoder. CAN type and SMD type available.

Features

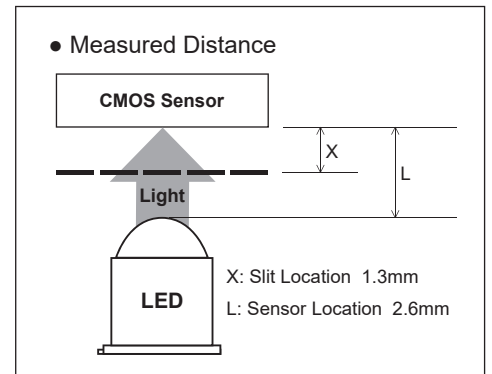
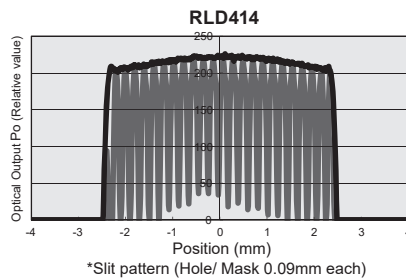
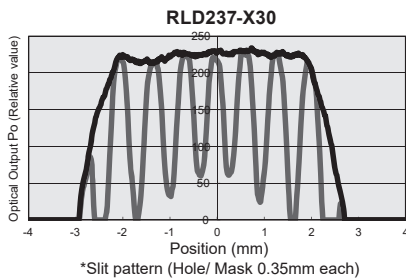
- CAN Type: Hermetic seal attains high reliability.
- SMD Type (RLD414): One of a kind aspheric lens provides excellent parallelism and flatness.

Applications

- Light source for encoder
- Switch of light
- Automated industrial machine



- Comparison of slit characteristics



- Absolute Maximum Ratings

Ta=25°C

Item	Symbol	Rating					Unit	Remarks column
		RLD222-A	RLD223	RLD288	RLD237-X30	RLD414		
Forward Current	IF	100	100	100	80	50	mA	
Forward Current Delating Ratio	-	1	1	1	0.67	0.92	mA/°C	Ta = 25°C or more
Pulse Forward Current	IFP	1	1	-	-	-	A	tw=100μs, T= 10ms
Reverse Voltage	VR	6	6	3	5	5	V	
Power Dissipation	P	200	200	200	150	200	mW	
Operating Temperature	Topr	-40~125	-40~125	-20~100	-30~85	-40~105	°C	
Storage Temperature	Tstg	-55~125	-55~125	-30~100	-40~100	-40~105	°C	
Soldering Temperature	Tsold	260	260	260	260	No leads	°C	*

At least 2 mm away from the base of the lead for at least 5 seconds

- Electro-Optical Characteristics

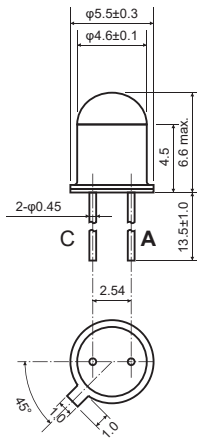
Ta=25°C

Item	Symbol	RLD222-A				RLD223				RLD288				Unit
		min.	typ.	max.	Condition	min.	typ.	max.	Condition	min.	typ.	max.	Condition	
Forward Voltage	VF	-	1.55	2	IF=100mA	-	1.55	2	IF=100mA	-	1.55	2	IF=50mA	V
Reverse Current	IR	-	-	10	VR=6V	-	-	10	VR=6V	-	-	10	VR=3V	μA
Peak Wavelength	λp	-	910	-	IF=100mA	-	910	-	IF=100mA	-	910	-	IF=50mA	nm
Spectral Half Width	Δλ	-	80	-	IF=100mA	-	80	-	IF=100mA	-	80	-	IF=50mA	nm
Radiant Flux	Po	8	10	-	IF=100mA	6	8	-	IF=100mA	5	9	-	IF=50mA	mW

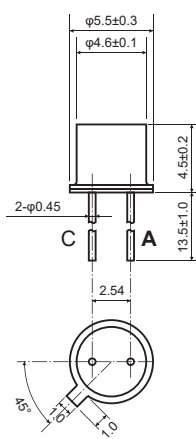
Item	Symbol	RLD237-X30				RLD414				Unit
		min.	typ.	max.	Condition	min.	typ.	max.	Condition	
Forward Voltage	VF	-	1.55	1.7	IF=20mA	-	1.55	1.8	IF=20mA	V
Reverse Current	IR	-	-	10	VR=5V	-	-	10	VR=5V	μA
Peak Wavelength	λp	-	870	-	IF=20mA	820	850	880	IF=20mA	nm
Spectral Half Width	Δλ	-	40	-	IF=20mA	-	30	-	IF=20mA	nm
Radiant Flux	Po	-	2	-	IF=20mA	2.5	3.5	5.5	IF=20mA	mW

• Dimensions

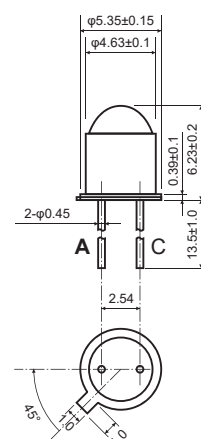
RLD222-A



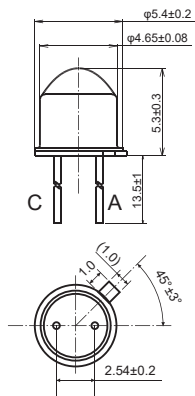
RLD223



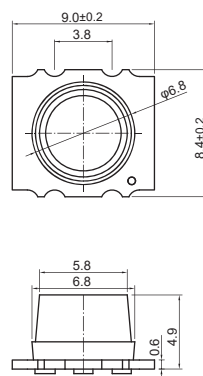
RLD288



RLD237-X30



RLD414



Unit: mm