



### Features

- Low Profile
- Three phase filter delta (500Vac)
- Type of inductance coil is Ferrite
- The capacitance of Y cap is selectable

### Applications

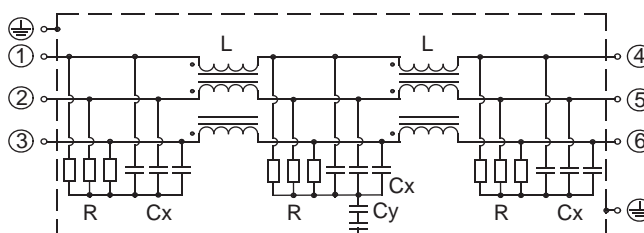
- Inverter power supplies, UPS, NC controlled machineries.



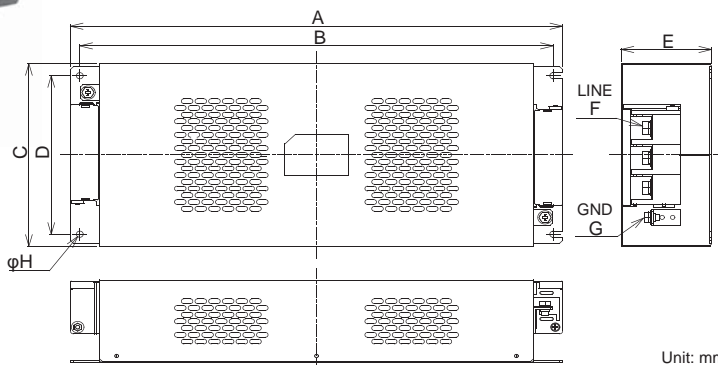
Safety Standard		File No.
UL	:UL1283	E78644
cUL	:C22.2, No.8-M1986	
SEMKO	:EN60939	SE/0142-35A

The "ENEC" mark is a common European product certification mark based on testing to harmonised European safety standard.

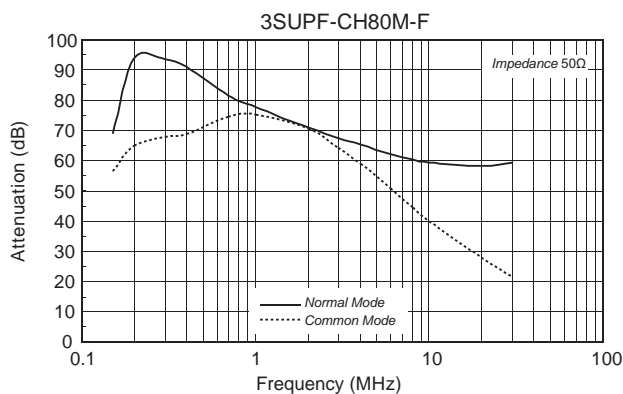
### • Circuit



### • Dimensions



### • Static characteristics (Representative example)



Model Number	Dimensions (mm)							
	A	B	C	D	E	F	G	H
3SUPF-CH80M-F	435	419	160	135	85	M8	M6	6.5
3SUPF-CH100M-F								
3SUPF-CH150M-F	468	450	190	165	86			
3SUPF-CH200M-F								
3SUPF-CH250M-F	583	563	195	102	M10	M8		
3SUPF-CH300M-F								

### Electrical Specifications

Rated Voltage **500Vac**

Safety Standard	Model Number*1	Rated Current (A)	Test Voltage *2	Insulation Resistance	Leakage Current *3 max.	Voltage Drop max.	Temperature Rise max.	Operating Temperature (°C)	Weight typ.(kg)
	3SUPF-CH80M-F	80	Line to Case 2,500Vac 50/60Hz 60sec	Line to case 100MΩmin (at 500Vdc)	5.5mA (at 500Vac 60Hz)	1.0Vac	60K	-25 ~ +50 (Derating of current from 50 to 85°C)	8.0
	3SUPF-CH100M-F	100							7.7
	3SUPF-CH150M-F	150							11.5
	3SUPF-CH200M-F	200							15.0
	3SUPF-CH250M-F	250							15.2
	3SUPF-CH300M-F	300							14.2

\*1 Standard type \*2 Leakage current of Standard type \*3 Leakage current of standard type