



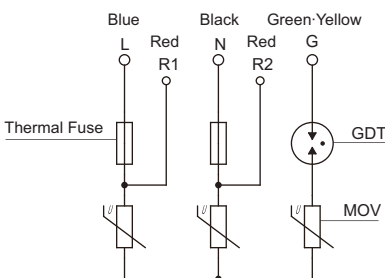
Features

- SPD with a fail safe function to prevent short-circuit (separation of circuit and alarm contact that is easily to found the timing of changing the products)
- Compliance with IEC 61643-1 that meets the new JIS standards
- Nominal discharge current (In) 8/20 μ s-2.5kA
Max. discharge current (Imax) 8/20 μ s-5kA
- Voltage protection level
- Common mode 1.2/50 μ s-15kV available.
- Impulse test category: Class II (Type II)
- Quick response for surge

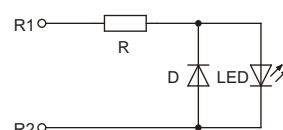
Applications

- Power conditioner for solar photovoltaic system
- Electrical vehicle charger
- LED exterior illumination
- Tapping machine, NC machine, other machine tools
- Lithography equipment, Washing device, IC tester
- Injection molding machine, Winding machine, Surface mounter
- Vehicle air conditioner
- Servo amplifier
- Electric facility, Industrial equipment

Circuit



Circuit example of LED warning light



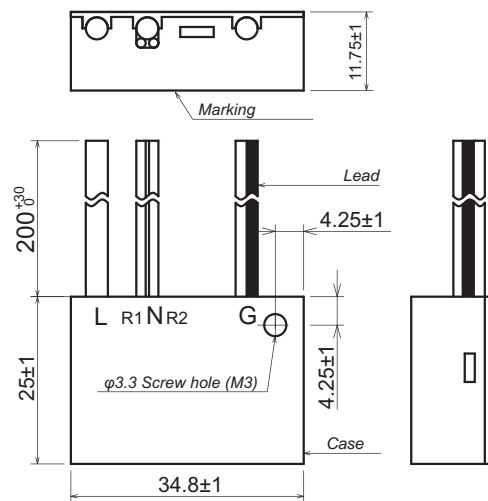
*LED warning light is not supplied with the product.



Safety Standard		File No.
UL	:UL1449 4th.	E322107
cUL	:C22.2 No.269.5	
UL-EU	:IEC61643-11:2011 :EN61643-11:2012	



Dimensions



Unit: mm

Electrical Specifications

Safety Standard	Model Number		Rated Voltage 50/60Hz (Vac)	Max. Continuous Operating Voltage (Vac)	Varistor Voltage (V) $\pm 10\%$	DC Breakdown Voltage Ez +30	Impulse Life Test 8/20 μ s 1,000A (times)	Nominal Discharge Current 8/20 μ s (A)	Max. Discharge Current 8/20 μ s (A)	Voltage Protection Level (V)
	GFA-300-Q4	L-N	250	300	480	-	Aprox.300	2,500	5,000	1,400
		L, N-G	-	-	-	1,200				

Operating Temperature: -40~+90°C