

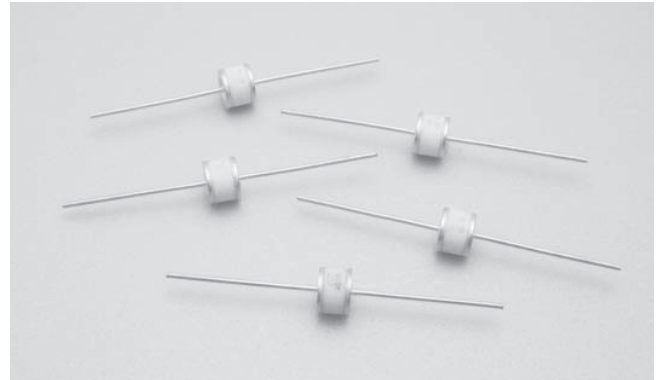


Features

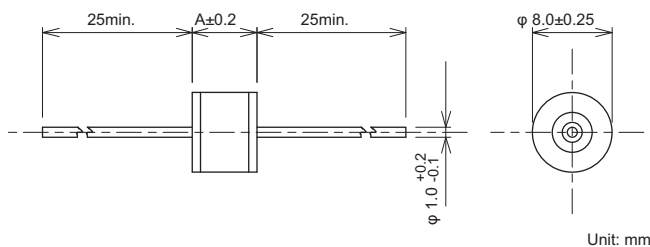
- Quick response for surge
- High impulse current capacity
- It can withstand alternating current

Applications

- Telephone, PBX, Wireless base station, Optical transmission equipments, CATV transmission equipments, Fire alarm systems and Home security systems.

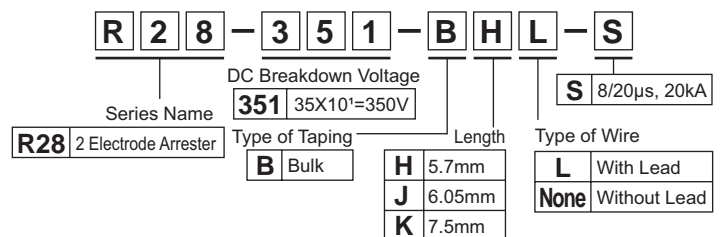


Dimensions

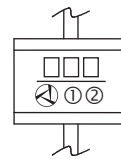


Model Number	A
R28-□□□-BHL	5.7
R28-□□□-BJL	6.05
R28-□□□-BKL	7.5

Model numbering system



Description of marking



□□□..... DC Breakdown Voltage
eg.) R28-351-BHL-S→351

[Lot No.] ①..... Identification of manufacture year
eg.) 2016→6
②..... Manufacture month (see below)

Month	1	2	3	4	5	6	7	8	9	10	11	12
Symbol	A	B	D	E	F	G	H	J	K	L	M	N

Electrical Specifications

Low Voltage Type

(Conforms to ITU-T)

Model Number	DC Breakdown Voltage 100V/s~2,000V/s (V) ±20	Impulse Sparkover Voltage 100V/μs (V) max	Insulation Resistance (MΩ) min.	Capacitance 1MHz (pF) max.	Impulse Life Test 10/1,000μs (A)300 times	Alternating Discharge Current 50Hz, 1s 10 times (A)	Impulse Discharge Current 8/20ms (A)
R28-900-BHL-S	90	450	10,000(DC50V)	1.5	100	10	20,000
R28-231-BHL-S	230	600	10,000 (DC100V)				
R28-251-BHL-S	250						
R28-301-BHL-S	300	650					
R28-351-BHL-S	350	750					
R28-401-BHL-S	400	800					
R28-471-BHL-S	470	900					
R28-601-BHL-S	600	1,300					

High Voltage Type

Model Number	DC Breakdown Voltage 500V/s (V)±20	Insulation Resistance (MΩ) min.	Capacitance 1MHz (pF) max.	Withstanding Voltage	Impulse Life Test 8/20μs (A)300A times	Impulse Discharge Current 8/20μs (A)
R28-801-BHL-S	800	10,000(DC250V)	1.5	-	1000	20,000
R28-102-BHL-S	1,000	10,000(DC500V)		-		
R28-152-BHL-S	1,500			-		
R28-242-BJL-S	2,400			AC1,250V 3s		
R28-302-BKL-S	3,000			AC1,500V 60s		
R28-362-BKL-S	3,600			AC1,800V 3s		
R28-402-BKL-S	4,000			AC2,000V 60s		
R28-452-BKL-S	4,500					

Operating Temperature: -40~+90°C