

Features

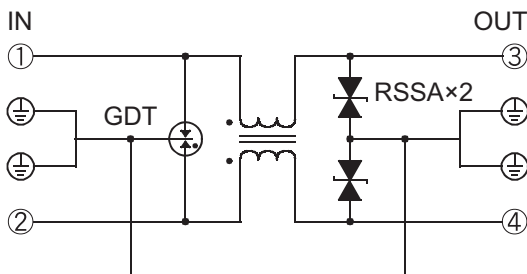
- SPD for data signal line and control line
- Compliance to JIS C 5381-2 and category C2/D1
- Impulse withstand current C2: 8/20 μ s-5kA
D1: 10/350 μ s-2.5kA
- Longer impulse current life and higher impulse withstand current than old R·S·M·RL
- Thin model for DIN rail type

Applications

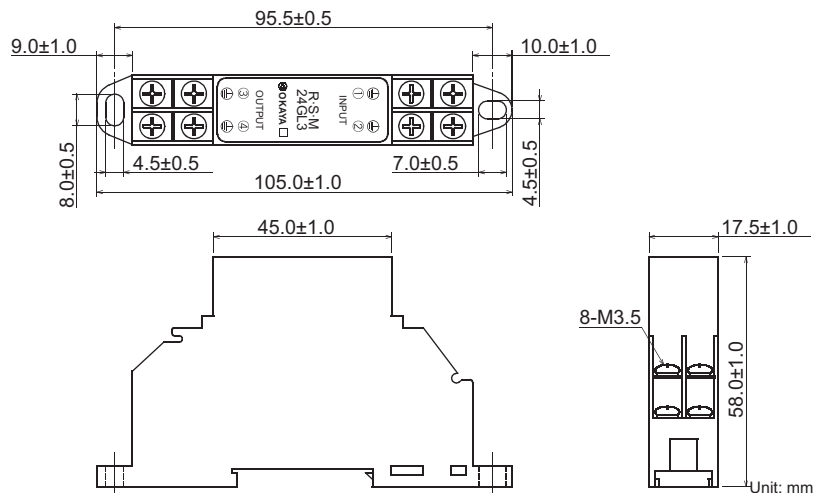
- Data processing machine and control machine with communication signal line
- LED light dimmer
- Fire alarm apparatus system
- Security camera
- Outdoor display unit



• Circuit



• Dimensions



Electrical Specifications

	Model Number		Class	R·S·M·5GL3-DIN	R·S·M·12GL3-DIN	R·S·M·24GL3-DIN	R·S·M·48GL3-DIN
	In	Out					
Rated Voltage	①,②	③,④		DC5.0V	DC12.0V	DC24.0V	DC48.0V
Max. Continuous Operating Voltage	①,②	③,④		DC6.63V	DC14.5V	DC26.8V	DC55.1V
Rated Current	①,②/③,④		-	3A			
	③,④- \perp	-	-	30V	60V	70V	100V
Impulse Discharge Current	①,②- \perp	-	Category C2	8/20 μ s-5kA, 5 times for each positive and negative			
			Category D1	10/350 μ s-2.5kA, 1 time for each positive and negative			
Impulse Life Test	①,②- \perp	-	Category C3(B1/B3)	10/1,000 μ s-100A, 300 times			
			Category B2	5/300 μ s(10/700 μ s)-100A, 300 times			
			Category C1	8/20 μ s-500A, 300 times			

Operating Temperature: -40~+85°C