



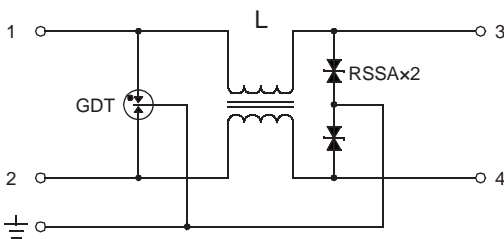
Features

- SPD for data signal line and control line
- Compliance to JIS C 5381-2 and category C2/D1
- Impulse withstand current C2: 8/20μs-5kA
D1: 10/350μs-2.5kA
- Longer impulse current life and higher impulse withstand current than old R·S·M-RL.

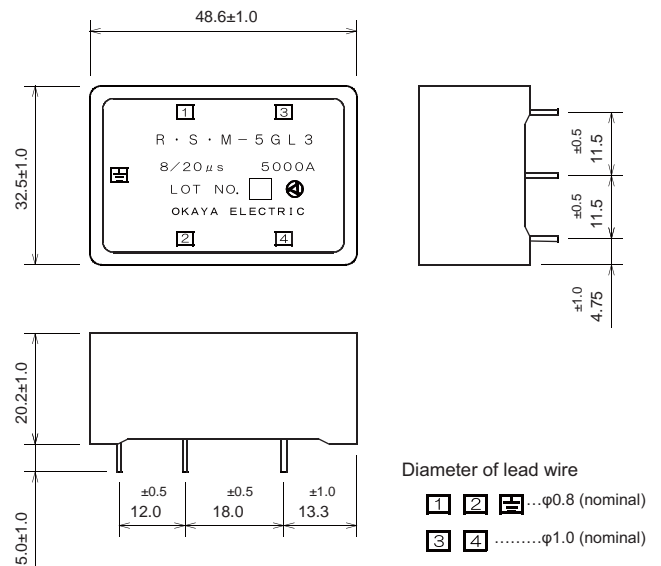
Applications

- Data processing machine and control machine with communication signal line
- LED light dimmer
- Fire alarm apparatus system
- Security camera
- Outdoor display unit

Circuit



Dimensions



Unit: mm

Electrical Specifications

Model Number	R·S·M-5GL3	R·S·M-12GL3	R·S·M-24GL3	R·S·M-48GL3		
Rated Voltage	①,②- 5V	-	DC5.0V	DC12.0V	DC24.0V	DC48.0V
Max. Continuous Operating Voltage	①,②- 6.3V	-	DC6.63V	DC14.5V	DC26.8V	DC55.1V
Rated Current	①-③-④-②	-	3A			
Residual Voltage (Representative Value) 1.2/50μs-8/20μs, 10kV-5kA	③,④- 30V	-	30V	60V	70V	100V
Impulse Discharge Current	①,②- 5V	Category C2	8/20μs-5kA, 5 times for each positive and negative			
		Category D1	10/350μs-2.5kA, 1 time for each positive and negative			

Operating Temperature: -20~+60°C