



RSP-232-9 series is designed for RS(EIA)-232 which is widely used as standard specifications for data input-output in serial data terminals. These protectors will be installed between equipment and cable to protect equipment from surge caused by electrostatic discharge and switching surge.

This will be installed in both end of the cable. Also 9 pin type is available for the use in IBM PC.

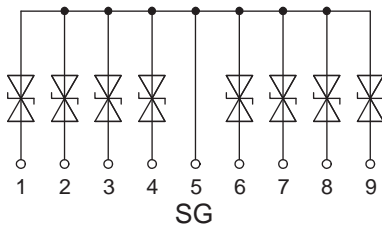
Electrical Specifications

- Breakdown voltage: 22V @1mA (L-SG)
- Impulse life: 25,000V 500pF 0Ω, more than 5,000 times

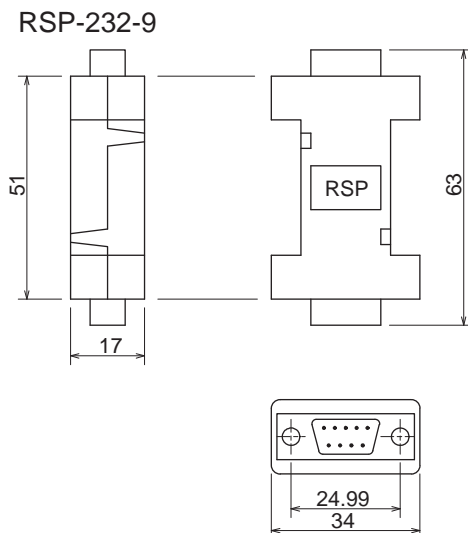


• RSP-232-9

• *Circuit*



• *Dimensions*



Unit: mm

Features

- For telephone line use.
- This protector consists of RSSA (silicon surge absorber) and R·A·V.
- Excellent response time and endurance.
- Available in PCB mounting type and box with modular jack type.

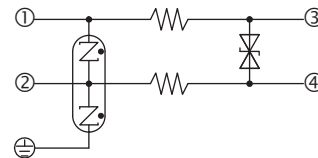


• RSP-TEL

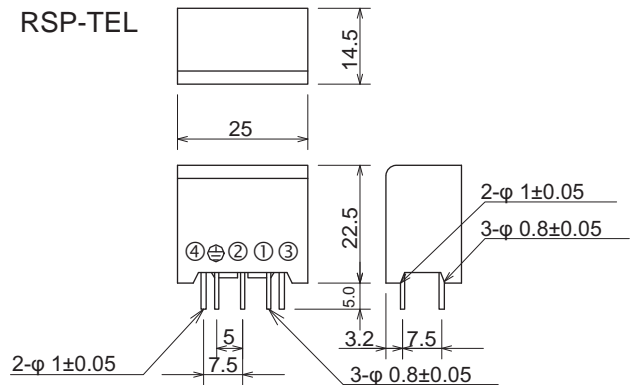


• RSP-TEL-B

• *Circuit*

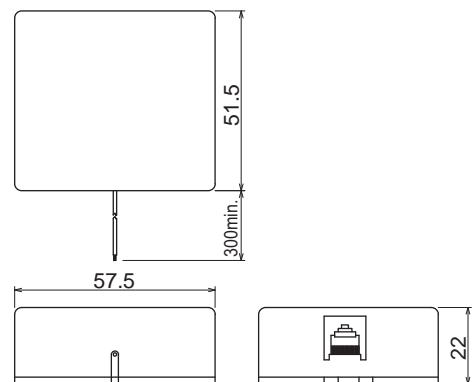


• *Dimensions*



Unit: mm
Tolerance: ±0.5

RSP-TEL-B



Unit: mm
Tolerance: ±1.0