



**Features**

- Uses wiring-easy terminal block.
- The super high  $\mu$  core allows high attenuation.
- Bleeder resistor for electric shock protection.

**Applications**

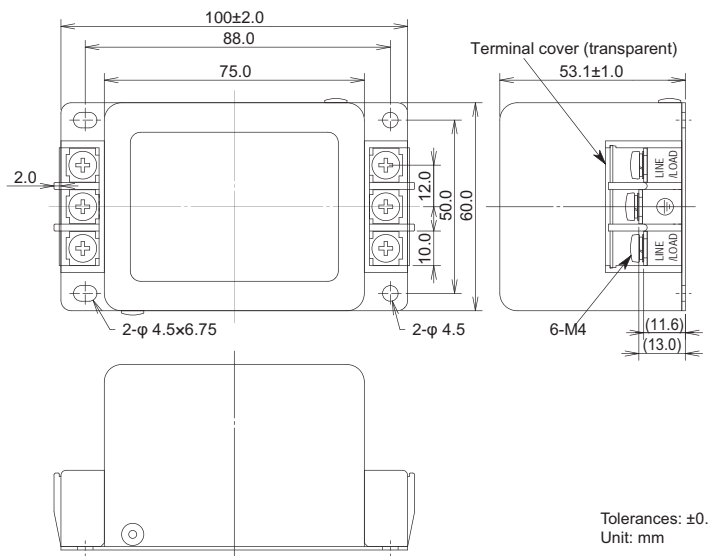
- Information processing devices, Office appliances, Various control systems and etc.



Safety Standard		File No.
UL	:UL1283	E78644
cUL	:C22.2, No.8-M1986	
TÜV	:EN60939	R2-50006839

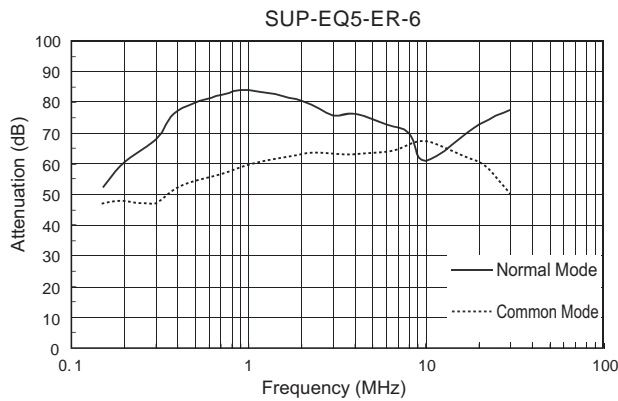


• *Dimensions (5~30A)*

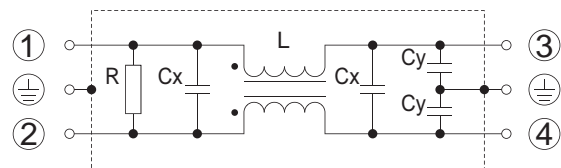


Tolerances: ±0.5  
Unit: mm

• *Static characteristics (Representative example)*



• *Circuit (5~30A)*



**Electrical Specifications**

Rated Voltage **250Vac**

Safety Standard	Model Number	Rated Current (A)	Test Voltage	Insulation Resistance	Leakage Current max.	Voltage Drop max.	Temperature Rise max.	Operating Temperature (°C)	Insertion losses		Weight typ.(g)
									Normal Mode (MHz)	Common Mode (MHz)	
	SUP-EQ5-ER-6	5	Line to Case 2,500Vac 50/60Hz 60sec	Line to Case 100MΩmin (at 500Vdc)	1mA (at 250Vac 60Hz)	1.0Vac	45K	-25 ~ +55 (100°C with Temp. rise)	0.15 ~ 30	0.15 ~ 20	450
	SUP-EQ10-ER-6	10							0.2 ~ 30	0.6 ~ 20	
	SUP-EQ15-ER-6	15							0.4 ~ 30	1.0 ~ 30	
	SUP-EQ20-ER-6	20								3.0 ~ 30	
	SUP-EQ30-ER-6	30									

Guaranteed attenuation is more than 30dB in normal mode and common mode.  
Available leakage current 70 $\mu$ A max.(250Vac, 60Hz) type for medical equipments and low leakage current equipments.