



SUP-MH-ER-4 SERIES

NOISE FILTERS



Features

- Single phase filter.
- The adoption of super high m core material ensures high attenuation.
- Leak current lower than 0.6mA (250Vac, 60Hz).

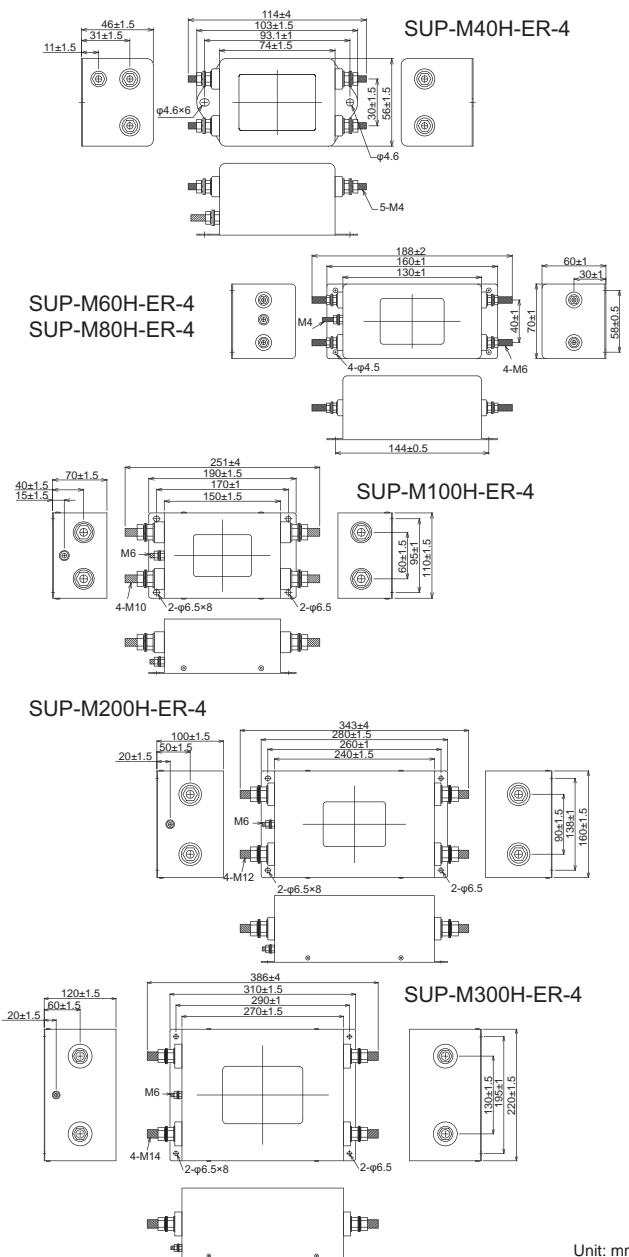
Applications

- PCs, Printers, UPS, Office appliances, Measuring devices, and Control systems.



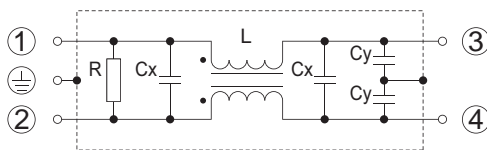
Safety Standard	File No.
UL : UL1283	E78644

Dimensions

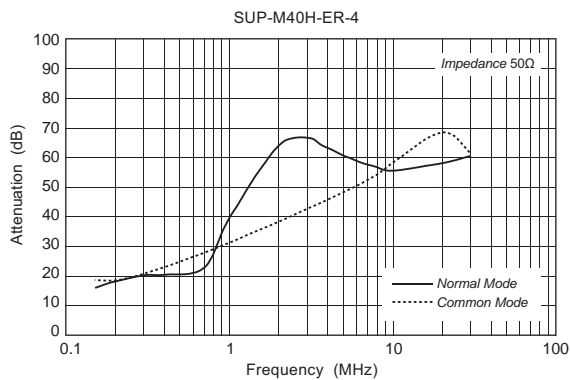


Unit: mm

Circuit



Static characteristics (Representative example)



Electrical Specifications

Rated Voltage **250Vac**

Safety Agency	Model Number	Rated Current (A)	Test Voltage	Insulation Resistance	Leakage Current max.	Voltage Drop max.	Temperature Rise max.	Operating Temperature (°C)	Insertion losses		Weight typ.(kg)		
									Normal Mode (MHz)	Common Mode (MHz)			
	SUP-M40H-ER-4	40	Line to Line 1,000Vac 50/60Hz 60sec Line to Ground 2,000Vac 50/60Hz 60sec	Line to Ground 6,000MΩmin (at 500Vdc)	0.6mA (at 250Vac 60Hz)	Less than 1.0Vac	35K	-25 ~ +50	*1	1.0 ~ 30	*4	2.0 ~ 30	0.4
	SUP-M60H-ER-4	60							*2	0.6 ~ 30	*5	2.0 ~ 30	0.9
	SUP-M80H-ER-4	80							*2	0.6 ~ 30	*5	2.0 ~ 30	1.0
	SUP-M100H-ER-4	100							*3	0.4 ~ 30	*5	2.0 ~ 30	2.0
	SUP-M200H-ER-4	200							*3	0.4 ~ 30	*5	2.0 ~ 30	7.2
	SUP-M300H-ER-4	300							*3	0.4 ~ 30	*5	2.0 ~ 30	12.0

Guaranteed attenuation of *1 is 30dB, *2 is 35dB, *3 is 40dB, *4 is 25dB and *5 is more than 20dB.